



Best Practices for the Use of RAS in HMA: Instructor Guide

Implementation Report 5-6614-01-P1

Cooperative Research Program

TEXAS A&M TRANSPORTATION INSTITUTE
COLLEGE STATION, TEXAS

in cooperation with the
Federal Highway Administration and the
Texas Department of Transportation
<http://tti.tamu.edu/documents/5-6614-01-P1.pdf>

Best Practices for the Use of RAS in HMA

Instructor Guide

Fujie Zhou, Ph.D., P.E.
Research Engineer
Texas A&M Transportation Institute

Product 5-6614-01-P1
Project 5-6614-01

Project Title: Implementation of RAS Best Practices and Piloting Rejuvenators in Key Districts

Performed in cooperation with the
Texas Department of Transportation
and the
Federal Highway Administration

Published: February 2019

TEXAS A&M TRANSPORTATION INSTITUTE
The Texas A&M University System
College Station, Texas, 77843-3135

Table of Contents

Introduction	5
Course Organization	5
Course Coordination	6
Class Size	6
Host Agency Responsibilities	6
Room Requirements	6
Training Site	7
Participants and Instructors	7
Final Arrangements	7
Participant Requirements	8
Target Audience	8
Course Goal	8
Course Modules	9
Training Evaluation Form	60

Introduction

The asphalt paving industry has always advocated recycling, including reclaimed asphalt pavement (RAP), recycled asphalt shingles (RAS), tires, etc. The earliest recycling asphalt pavement dates back to 1915. In addition to conserving energy and protecting the environment, the use of RAP/RAS can significantly reduce the cost of hot-mix asphalt (HMA) paving. RAP has been the most extensively recycled material in the history of the asphalt paving industry. With increases in the price of asphalt cement and subsequent price fluctuations, the industry has further amplified its recycling efforts. Most recently, the use of RAS in HMA has become another black gold to the asphalt paving industry since RAS contains a significant amount of asphalt binder (see Table 1). There are two basic types of roofing shingle scraps: 1) post-consumer asphalt shingles or tear-off asphalt shingles (TOAS), and 2) manufacture waste asphalt shingles (MWAS) including roofing shingle tab punch-outs and out-of-spec shingles. MWAS is called prompt roofing shingle scrap in some publications. In February 2009, the Texas Commission on Environmental Quality (TCEQ) issued an Authorization Memo to allow HMA plants to include either MWAS or TOAS under the TCEQ air quality standard permit for permanent HMA plants. Since then, RAS has been used in various pavement constructions.

Table 1. Typical Compositions of New Residential Asphalt Shingles.

Component	Organic Shingles, % by wt.	Fiberglass Shingles, % by wt.
Asphalt Cement	30–36	19–22
Reinforcing Mat	2–15	2–5
Mineral Granules/aggregate	20–38	20–38
Mineral Filler/stabilizer	8–40	8–40
Adhesives (modified asphalt based)	0.2–2	0.2–2

The main objective of this workshop is to present best practices for RAS collection, processing, screening, and stockpile management of processed shingles and RAS mix design, production, construction, and performance evaluation.

Course Organization

One or two instructors will present this half day course using the curriculum materials, which includes an instructor guide, a student handbook, and a software CD. In addition, the instructors need internet access and projector equipment.

The course is designed to run for two instructional hours, typically from 9:30 a.m. to 11:30 a.m. or from 1:30 p.m. to 3:30 p.m. The instructional time may vary plus or minus 30 minutes depending on the course sponsor.

The complete lesson plan is composed of four modules:

- Module 1: Introduction.

- Module 2: RAS processing and stockpile management.
- Module 3: RAS mix design and performance evaluation.
- Module 4: RAS mix production and construction.

Course Coordination

Usually, a Training Coordinator from the Texas Department of Transportation (TxDOT) will submit a request for the course with requested dates and training sites to the contractor's course scheduler, who in turn, will contact the course contractor. The contractor will then contact the TxDOT Training Coordinator to discuss possible dates for the course. Once a list of potential dates is compiled, the contractor will check on the availability of the instructors. The contractor will confirm the delivery date with the TxDOT Training Coordinator, Course Scheduler, and instructors. Then the course session is formally scheduled for the agreed dates and training site. This also will authorize the contractor to conduct the course. A confirmation is emailed to the instructors.

The contractor will communicate with the host DOT Coordinator to: 1) confirm times of instruction; 2) obtain directions to training facility; and 3) discuss host requirements.

Class Size

The maximum class size permitted is 40 people; however, the smaller the class size, the better, with a minimum of 5. The participant student handbook should be placed at each participant's seat by the TxDOT Training Coordinator prior to the beginning of the class. TxDOT will provide sign-in sheets, pencils, etc. The TxDOT Training Coordinator needs to notify the contractor's Course Scheduler concerning any changes to the number of students.

Host Agency Responsibilities

Host agency is responsible for visual aids for this course, which include the following:

- LCD projector compatible with a notebook computer (e.g., InFocus® or similar make).
- Cable necessary to connect projector to computer, if possible.
- Electronic remote to advance slides in PowerPoint® presentation (if available).
- Projection screen.
- Laser pointer (if available).
- Whiteboard with dry erase pens and eraser.

All equipment should be placed in the room for the instructors to check a half hour prior to the course.

Room Requirements

Instructors will arrange the classroom as they deem most appropriate given the number of participants. All participants should be able to see the screen and instructors. Participants and instructors should be able to move about the room without obstruction.

A preparation table and presentation table should be provided for the instructors. The presentation table will be for the audiovisual equipment, and the preparation table will be for the instructors' materials. The room should be in a quiet area and have a lighting system that permits convenient dimming of the lights, especially where the screen is located.

Training Site

Great care should be taken to select a room that is handicap accessible and will not be overcrowded, too hot or too cold, or subject to outside distractions. The instructors should provide any specific requirements for the training facility so that the training coordinator may:

- Reserve a training room for the duration of the course.
- Check to see if anyone else will be using the room for nighttime functions.
- Determine if books and equipment can be left in the room. Training courses, requiring special equipment or computers, must have after-hours security.

Participants and Instructors

Participants and instructors should be:

- Informed of course starting and ending times.
- Advised on training site address.
- Furnished with maps.
- Advised on parking arrangements.

Final Arrangements

Instructors will be responsible for:

- Reconfirming the training facilities.
- Discussing the seating arrangements and who will set up the room.
- Discussing what time the room is unlocked/locked.
- Checking to make sure a technician is available in case there are problems setting up the room or if something goes wrong during the course.

One day before the course:

- Set-up the Classroom.
- Organize the participant materials.
- Post directional signs.
- Test all equipment.

During the course:

- Instructors will identify whom they should contact if they need assistance.
- Instructors will provide a copy of the student handbook for all course participants.

After the course:

- Instructors will check to make sure students have the course evaluation forms.
- Students will complete evaluations.
- Clean up room and turn off lights and electronic equipment as needed.

Participant Requirements

TxDOT should provide notepads and pens, or instruct participants to bring notepads and pens with them.

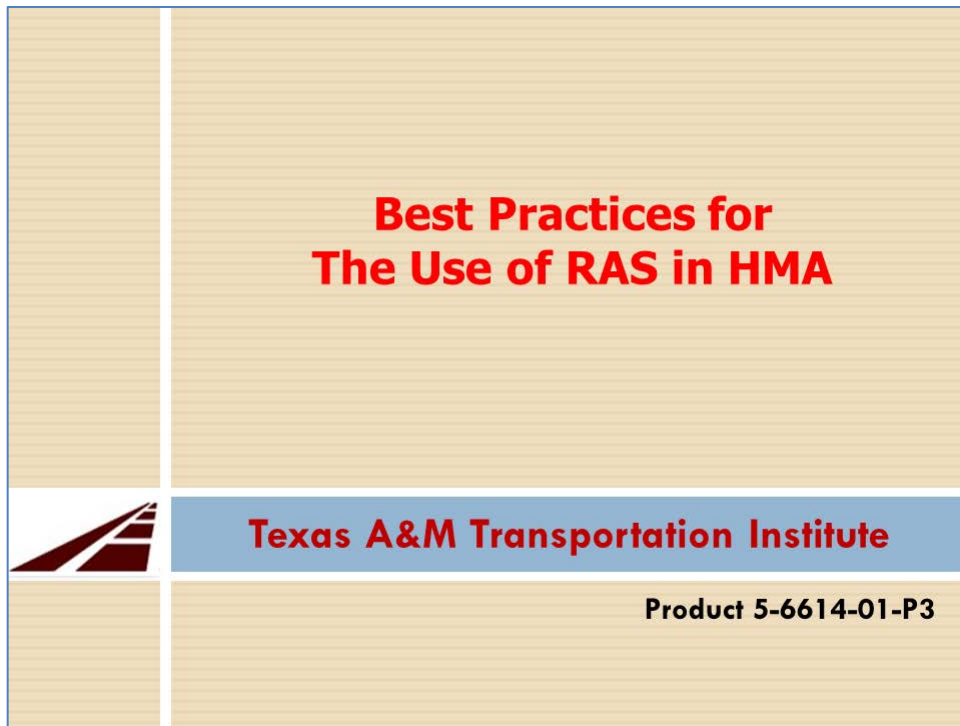
Target Audience

This course is designed for any individuals seeking to best use RAS/RAP in asphalt mixes.

Course Goal

The goal of this course is to present best practices for RAS collection, processing, screening, and stockpile management of processed shingles and RAS mix design, production, construction, and performance evaluation.

Course Modules



Key Message:	Training title
Interactivity:	Tell: In this lesson, we will learn the best practices for the use of RAS in HMA.
Notes:	NA

Presentation Outline

- Introduction
- RAS processing and stockpile management
- Impact of RAS on mix engineering properties
- Balanced RAS/RAP/rejuvenator mix design
- RAS mix production, construction, and performance
- Summary

Key Message:	Outline
Interactivity:	<p>Tell: This lesson will include six parts:</p> <ul style="list-style-type: none"> ▪ Introduction. ▪ RAS processing and stockpile management. ▪ Impact of RAS on mix engineering properties. ▪ Balanced RAS/RAP rejuvenator mix design. ▪ RAS mix production, construction, and performance. ▪ Summary.
Notes:	NA

Introduction

- Recycled asphalt shingle (RAS)
 - Two types: Manufacture waste and Tear-offs

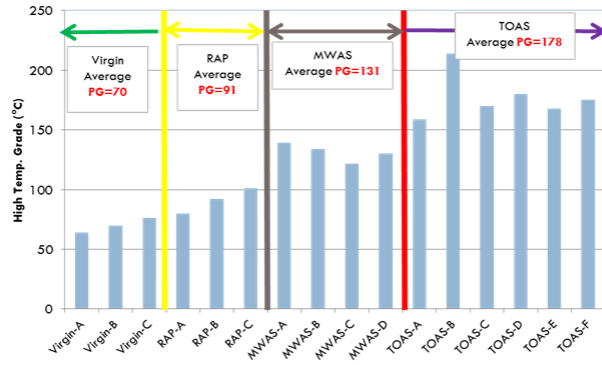



- RAS has high binder content: 20% or more
 - 5% RAS sometimes is equivalent to 20% RAP

Key Message:	RAS types and characteristics
Interactivity:	<p>Tell: Two types of RAS are available:</p> <ul style="list-style-type: none"> ▪ Manufacture waste asphalt shingles (MWAS). ▪ Tear-off asphalt shingles (TOAS). <p>Tell: RAS has very high asphalt content, 20 percent or more.</p>
Notes:	NA

Introduction




- Recycled binders from RAS (or RAP) are very stiff



Key Message:	RAS binder characteristics
Interactivity:	<p>Ask: Does anyone know how stiff the RAS binder is?</p> <p>Tell: Compare the RAS binder with most often used virgin binders in Texas and RAP binders to show that RAS binder is far stiffer than the stiffest virgin binder used in Texas.</p>
Notes:	N/A.

Introduction

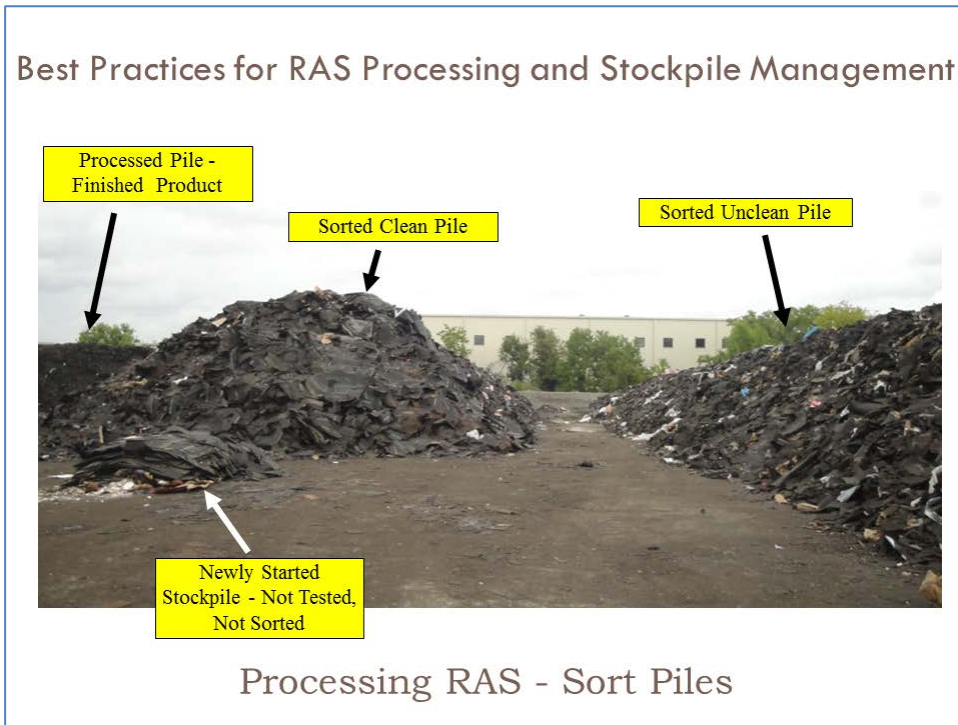
- **Benefit of RAP/RAS**
 - Save money
 - Reduce rutting
 - Benefit to environment
- **Concerns**
 - Variability ↔ best practices
 - **Cracking**
 - Reduce design air voids to increase binder content
 - Use soft virgin binders, especially on the low-temperature grade (i.e., PG XX-28, PG XX-34)
 - Add rejuvenators
 - Use balanced mix design method

Key Message:	Three benefits and two major concerns on the use of RAS in HMA
Interactivity:	<p>Tell: Why do we use RAS? Because of three benefits: 1) save money, 2) reduce rutting, and 3) good to the environment.</p> <p>Tell: there are also two major concerns: variability and premature cracking issue. Also the instructor should discuss different ways to address the premature cracking issue:</p> <ul style="list-style-type: none"> ■ Reduce design air voids to increase binder content. ■ Use soft virgin binders, especially on the low-temperature grade (i.e., PG XX-28, PG XX-34). ■ Add rejuvenators. ■ Use balanced mix design method.
Notes:	You should be no more than 10 minutes into the lesson at this point.



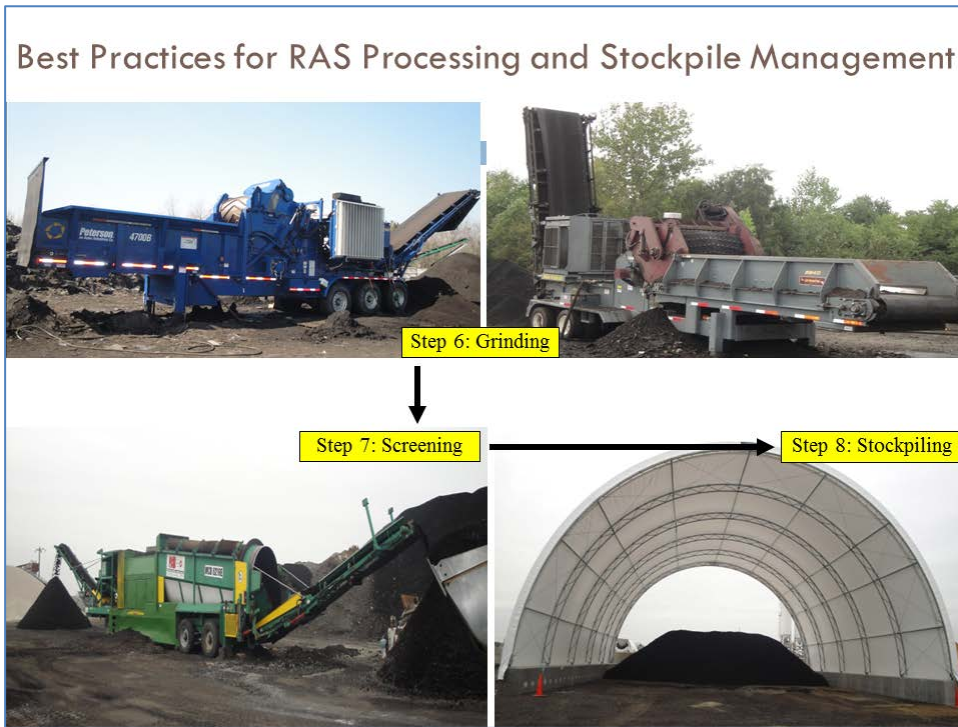
<p>Key Message:</p>	<p>Best practices for RAS processing and stockpile management</p>
<p>Interactivity:</p>	<p>Tell: Best practices for RAS processing and stockpile management include a total of eight steps:</p> <ul style="list-style-type: none"> ▪ Step 1: RAS collection. ▪ Step 2: Asbestos testing for tear-off asphalt shingles. ▪ Step 3: RAS sorting.
<p>Notes:</p>	<p>NA</p>



Key Message:	Best practices for RAS processing and stockpile management
Interactivity:	Tell: The instructor further describes the RAS sorting process.
Notes:	NA



Key Message:	Best practices for RAS processing and stockpile management
Interactivity:	<p>Tell: Best practices for RAS processing and stockpile management include a total of eight steps:</p> <ul style="list-style-type: none"> ▪ Step 4: Preparing to grind RAS. ▪ Step 5: Feeding RAS to grinder.
Notes:	NA



Key Message:	Best practices for RAS processing and stockpile management
Interactivity:	<p>Tell: Best practices for RAS processing and stockpile management include a total of eight steps:</p> <ul style="list-style-type: none"> ▪ Step 6: Grinding RAS. ▪ Step 7: Screening the grinded RAS. ▪ Step 8: Stockpiling RAS in a covered area
Notes:	NA

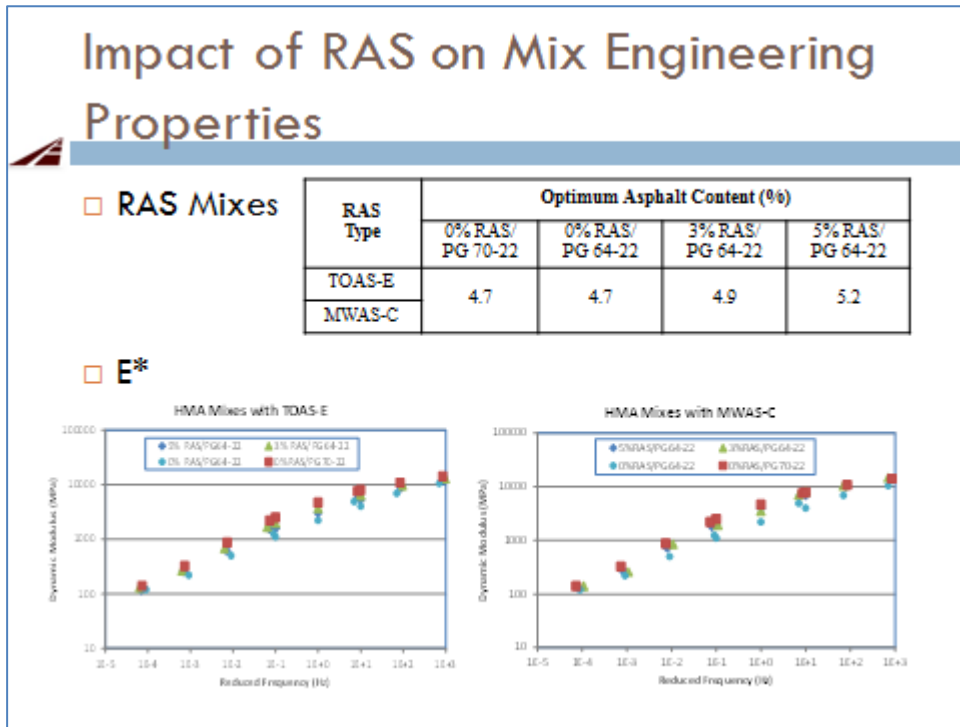
Impact of RAS on Mix Engineering Properties

- RAS Mixes
- Gradation
- Testing
 - E*
 - Hamburg
 - Overlay Test (OT)

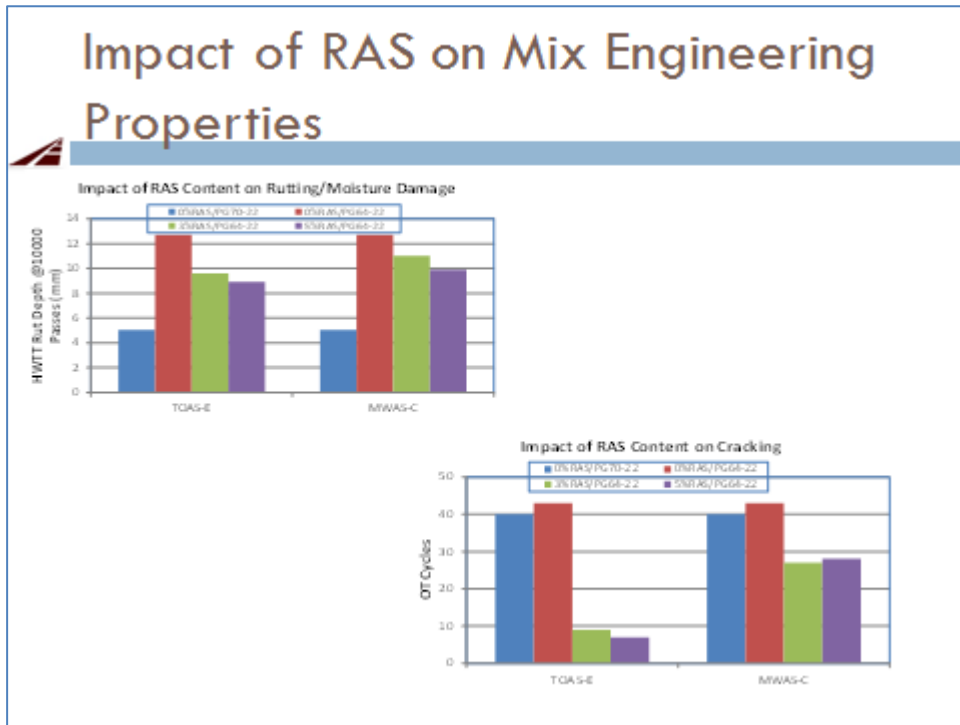
RAS Type	RAS Percentage and Virgin Binder			
	0% RAS/ PG 70-22	0% RAS/ PG 64-22	3% RAS/ PG 64-22	5% RAS/ PG 64-22
TOAS-E	X	X	X	X
MWAS-C			X	X

Aggregate Gradations of RAS Mixes

Key Message:	Impact of RAS on mix engineering properties
Interactivity:	<p>Tell: On this screen, the instructor will discuss the potential impact of RAS on three mix engineering properties:</p> <ul style="list-style-type: none"> ▪ Dynamic modulus (E*). ▪ Rutting resistance through Hamburg wheel tracking test. ▪ Cracking resistance through Overlay test (OT). <p>Tell: A dense-graded Type C mix is used for this study and three RAS contents are considered: 0, 3, and 5 percent.</p>
Notes:	NA



Key Message:	Impact of RAS on dynamic modulus
Interactivity:	Tell: The mixes with RAS have higher dynamic modulus than the virgin mix. The addition of RAS makes the mix stiffer.
Notes:	NA



Key Message:	Impact of RAS on rutting and cracking resistance
Interactivity:	Tell: The mixes with RAS have better rutting resistance but poorer cracking resistance.
Notes:	NA

Balanced RAP/RAS/Rejuvenator Mix Design for Project Specific Conditions

- Why **balanced** mix design
 - “Feature” of RAP/RAS mixes: Unknown VMA (VBE)
 - Need both **rutting and cracking tests** for mix design

- Why **project specific** mix design
 - One cracking criterion does not fit for all conditions (traffic, climate, pavement structure, existing pavement conditions for asphalt overlays)

Papers published in AAPT 2014 and 2015

Key Message:	Balanced RAP/RAS/Rejuvenator mix design for project specific conditions
Interactivity:	<p>Tell: The slide mainly discusses two things:</p> <ul style="list-style-type: none"> ▪ Why do we need balanced mix design? ▪ Why do we need to perform the mix design for project specific conditions?
Notes:	NA

Balanced RAP/RAS/Rejuvenator Mix Design for Project Specific Conditions

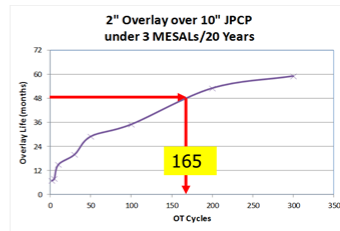
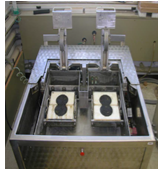
Three-step process

- Select rejuvenator type
- Select rejuvenator **dosage range**
 - ▣ Superpave PG requirements of rejuvenated binder
 - ▣ Aging characteristics of rejuvenated binder
- Finalize rejuvenator dosage through balancing rutting and cracking requirements of **asphalt mixture**

Key Message:	Balanced RAP/RAS/Rejuvenator mix design for project specific conditions
Interactivity:	<p>Tell: The balanced RAP/RAS/Rejuvenator mix design for project specific conditions has three steps:</p> <ul style="list-style-type: none"> ▪ Select rejuvenator type. ▪ Select rejuvenator dosage range. ▪ Finalize rejuvenator dosage through balancing rutting and cracking with a consideration of air voids.
Notes:	N/A

Balanced RAP/RAS/Rejuvenator Mix Design for Project Specific Conditions

- Hamburg test for rutting/moisture damage
- Overlay test for cracking
 - ▣ [OT requirement determined by Overlay program](#)
- Max. density-98% for controlling potential bleeding

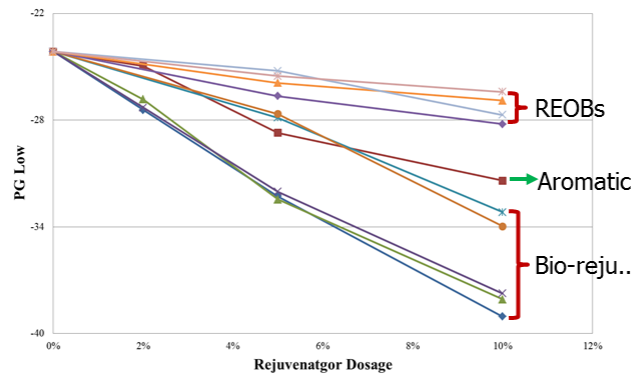


Key Message:	Balanced RAP/RAS/Rejuvenator mix design for project specific conditions
Interactivity:	Tell: This slide details rutting, cracking, and density (or air voids) requirements.
Notes:	NA

Balanced RAP/RAS/Rejuvenator Mix Design for Project Specific Conditions

Three-step process

Step 1: Select rejuvenator type

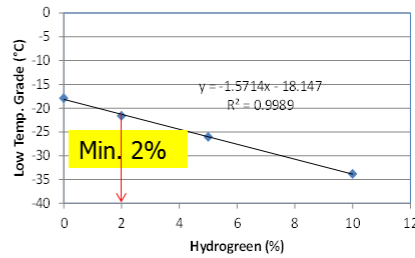
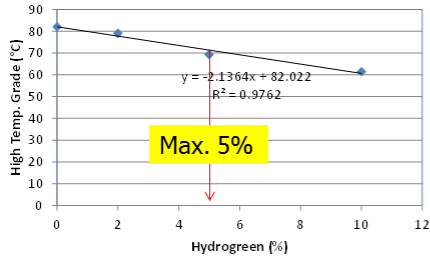


Key Message:	Balanced RAP/RAS/Rejuvenator mix design for project specific conditions: Step 1: select rejuvenator type
Interactivity:	Tell: Three types of rejuvenators are available on the market. It seems that bio-based rejuvenators are the most effective ones. However, even within each group, rejuvenators perform differently. Specific blend may be needed for each specific case.
Notes:	NA

Balanced RAP/RAS/Rejuvenator Mix Design for Project Specific Conditions

Three-step process

- Step 2: Select rejuvenator **dosage range**

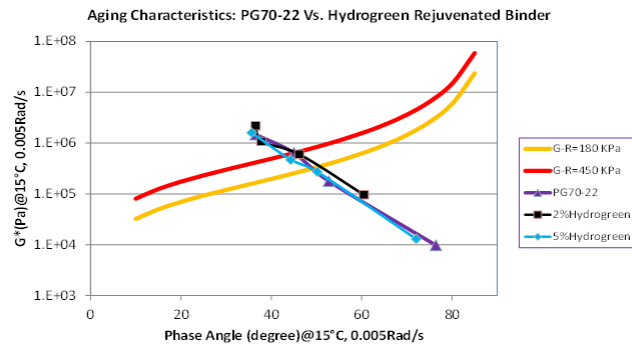


Key Message:	Balanced RAP/RAS/Rejuvenator mix design for project specific conditions: Step 2: select rejuvenator dosage range
Interactivity:	Tell: The high temperature PG controls the maximum dosage of rejuvenators and the low temperature PG controls the minimum dosage of rejuvenators.
Notes:	NA

Balanced RAP/RAS/Rejuvenator Mix Design for Project Specific Conditions

Three-step process

- Step 2: Select rejuvenator dosage range



Key Message:	Balanced RAP/RAS/Rejuvenator mix design for project specific conditions: Step 2: select rejuvenator dosage range
Interactivity:	Tell: In addition to binder PG requirement, the aging characteristics of the blend should be evaluated through Glower-Rowe parameter. The blend should have similar or even better aging resistance than the virgin binder.
Notes:	NA

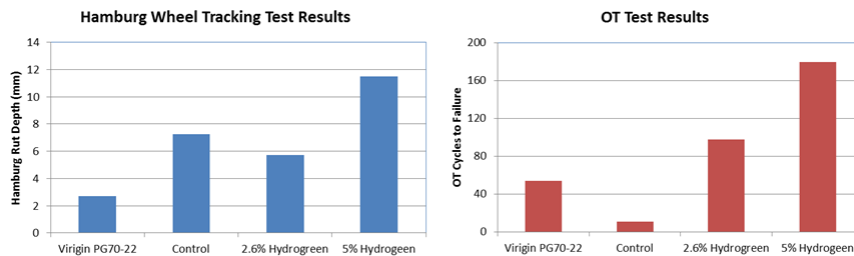
Balanced RAP/RAS/Rejuvenator Mix Design:

Step 3: Finalize rejuvenator dosage-balancing mix prop.

Rejuvenator dosage range for mix design

Rejuvenator content	Hydrogreen (weight of total asphalt binder)
Low end	2.6%
High end	5.0%

Hamburg and OT test results



<p>Key Message:</p>	<p>Balanced RAP/RAS/Rejuvenator mix design for project specific conditions: Step 3: Finalize rejuvenator dosage through balancing mix rutting and cracking requirements</p>
<p>Interactivity:</p>	<p>Tell: Select the final rejuvenator dosage based on rutting and cracking test results and associated requirements for specific project conditions.</p>
<p>Notes:</p>	<p>N/A</p>

RAS Mix Production and Construction



Key Message:	A typical asphalt mix production plant
Interactivity:	Tell: A separate RAS bin at this plant.
Notes:	N/A

RAS Mix Production and Construction



Key Message:	A typical construction site with paver, loading truck, and paving crew
Interactivity:	Tell: A good organized on-site construction sequence is very important, especially for the mixes containing RAP/RAS.
Notes:	NA

RAS Mix Production and Construction



- Areas of Concern
 - Clumping after grinding
 - Crusting more severe on long hauls
 - Tendency to stiffen quicker in trucks than standard hot mix
 - More difficult to hand work
 - Mat can be more sensitive to temperature segregation

Key Message:	Potential concerns on RAS mix production and construction
Interactivity:	Tell: Overall concerns on RAS mix production and construction as listed in the slide.
Notes:	NA

RAS Mix Production and Construction

- RAS Stockpile
 - Keep loaders off RAS stockpiles
 - Keep RAS stockpiles covered
 - RAS stockpiles will retain moisture; run moisture content each day prior to running mix
 - Separate high AC RAS from low AC RAS

Key Message:	RAS mix production and construction
Interactivity:	Tell: The instructor discuss five specific tips for RAS stockpile.
Notes:	N/A

RAS Mix Production and Construction



- Asphalt Plant
 - ▣ Keep RAS bin empty when not in use
 - ▣ Use a vibratory scalping screen to help break down or remove clumps that may be in the RAS material before entering the drum
 - ▣ Don't superheat the mix; it only makes it stiffer
 - ▣ Reframe from holding RAS mix overnight

Key Message:	RAS mix production and construction
Interactivity:	Tell: This screen shows four specific items worth of paying attention to at the asphalt plant.
Notes:	NA

RAS Mix Production and Construction

- Vibratory scalping screen



Key Message:	RAS mix production and construction
Interactivity:	Tell: The instructor should emphasize the importance of the vibratory scalping screen to loosen the clumped RAS.
Notes:	NA

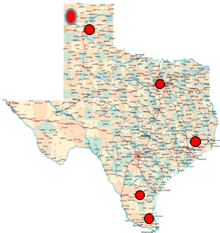
RAS Mix Production and Construction

- Roadway construction
 - Consider the weather
 - Consider the haul distance
 - Consider the trucks that haul the mix
 - Don't let mix set in trucks too long on job site
 - Check mix temperature when unloading trucks

Key Message:	RAS mix production and construction
Interactivity:	Tell: This screen lists five key items for roadway construction to ensure good quality construction.
Notes:	N/A

RAP/RAS Field Test Sections and Performance

- **Amarillo-Overlay: (Aug 2009)**
 - IH40: Heavy traffic; Cold weather; Soft binder
 - RAP: 0, 20, 35%
- **Pharr district-New Const.: (April 2010)**
 - FM1017: low traffic; Hot weather; stiff binder
 - RAP: 0, 20, 35%
- **Laredo-Overlay: SH359, 20%RAP (March 2010)**
- **Houston-New Const.:SH146, 15%RAP/5%RAS (Oct. 2010)**
- **Dalhart-Overlay: US87, 5%RAS (Oct. 2010)**
- **Austin-Overlay: FM973-9 test sections (Dec. 2011)**
- **Fort Worth-AC/CRCP: Loop 820 (July 2012)**



Key Message:	RAP/RAS field test sections and performance
Interactivity:	Tell: This screen shows the locations of many field test sections with RAP/RAS being constructed in the past.
Notes:	NA

Four Test Sections on IH40, Amarillo

- Section 0: 20% RAP section designed by contractor
- Section 1: 0% RAP section designed by contractor
- Section 2: 35% RAP section designed by TTI
- Section 3: 20% RAP section designed by TTI



Key Message:	RAP/RAS field test sections and performance
Interactivity:	Tell: This slide shows four specific test sections on IH40.
Notes:	NA

Summary: RAP Mix Design on IH40

Section	RAP (%)	Virgin binder	Mix design approach	AC (%)	Hamburg rut depth @20000	OT cycles
0	20	PG64-28	Item 340-Type C	5.0	3.7 mm	10
1	0	PG64-28	Item 340-Type C	4.8	4.4 mm	95
2	35	PG58-28	Balanced mix design	5.5	8.0 mm	200
3	20	PG64-28	Balanced mix design	5.3	7.4 mm	103

Key Message:	RAP/RAS field test sections and performance
Interactivity:	Tell: The balanced mix design method was used to design the test sections on IH40. The table in this slide details mix design information of each test section including both rutting and cracking test results.
Notes:	N/A

Performance of 4 Sections on IH40

- August 11, 2009, April 22, 2010
- Sept. 8, 2010, April 5, 2011
- Dec. 15, 2011, May 30, 2012
- Dec. 19, 2012, and May 16, 2013


Months	Section 0 (20% RAP - Contractor)	Section 1 (20% RAP - Contractor)	Section 2 (35% RAP - TT)	Section 3 (20% RAP - TT)
0	0	0	0	0
5	0	0	0	0
10	10	0	0	0
15	40	20	0	0
20	75	55	30	0
25	85	65	35	0
30	90	75	45	0
35	95	80	65	0
40	98	85	75	0
45	100	95	85	0

No rutting but cracking

Key Message:	RAP/RAS field test sections and performance
Interactivity:	Tell: In this slide, the performance history of four test sections on IH40 is displayed. Apparently, the 30 percent RAP mixes designed with balancing rutting and cracking requirements performed the best.
Notes:	N/A

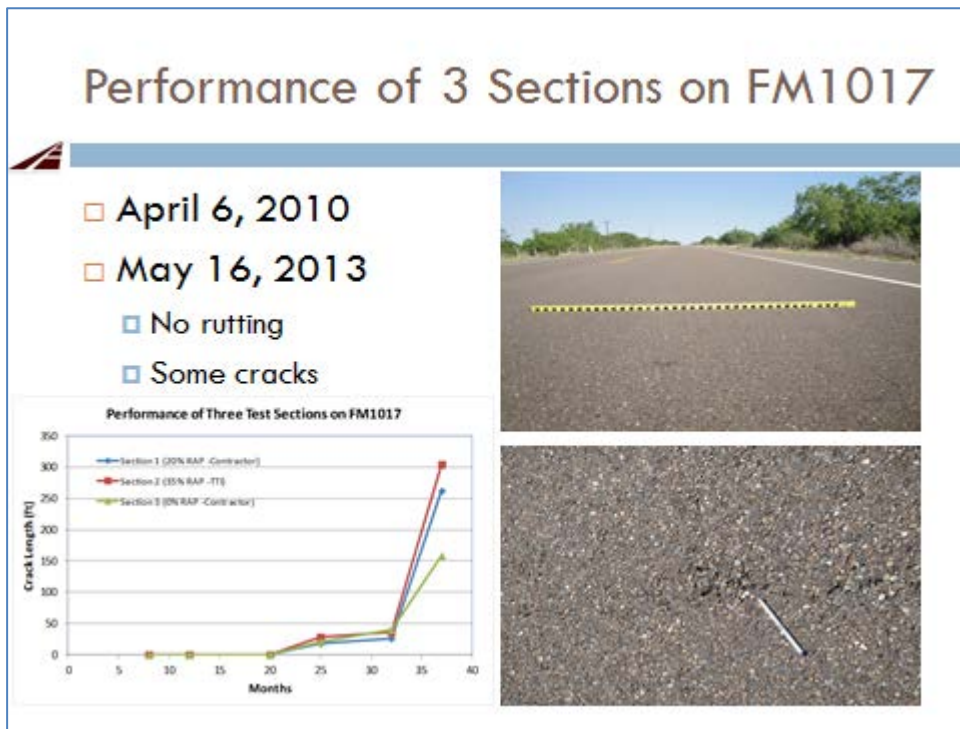
Three Test Sections on FM1017, Pharr

- New construction pavement
- 1.5 inch asphalt layer
- Hot weather
- FM road with low traffic



Section	RAP (%)	Virgin binder	Mix design approach	AC (%)	Hamburg rut depth @20000	OT cycles of plant mixes
1	20	PG64-22	Item 340-Type D	5.0	3.4 mm	6
2	35	PG64-22	Balanced mix design	6.4	9.3 mm	7
3	0	PG76-22	Item 340-Type D	4.9	2.2 mm	28

Key Message:	RAP/RAS field test sections and performance
Interactivity:	<p>Tell: On FM1017, three sections with different percentage of RAP were constructed in a hot climatic area. The five features of these test sections are listed below:</p> <ul style="list-style-type: none"> ▪ New construction pavement. ▪ 1.5 inch asphalt layer. ▪ Hot climate. ▪ Low traffic. ▪ All mixes with relatively poor cracking resistance.
Notes:	N/A



Key Message:	RAP/RAS field test sections and performance
Interactivity:	<p>Tell: This slide shows the performance history of these three test sections. It indicated that the performance of these sections is acceptable in the conditions of hot weather, low traffic, and no pre-existing cracks, although the three mixes have relatively poor cracking resistance.</p>
Notes:	N/A

Test Section on SH359, Laredo

- 3 inch asphalt overlay
- 20%RAP mix: OT cycles=3
- Existing condition: various cracks
- Hot weather
- Low traffic



3 years after
May 15, 2013



Key Message:	RAP/RAS field test sections and performance
Interactivity:	Tell: Another case for RAP mix with very few OT cycles performed well in the field due to low traffic and hot weather.
Notes:	N/A

Test Section on SH146, Houston

- New construction with strong foundation layers
- 2 inch, 5%RAS/15%RAP mix: OT cycles=3
- Warm weather
- Medium traffic



2.5 years after
May 10, 2013



Key Message:	RAP/RAS field test sections and performance
Interactivity:	Tell: This slide shows again that RAP/RAS mix has acceptable performance when it is applied in suitable conditions (new construction, strong foundation layers, warm weather, and medium traffic).
Notes:	N/A

Test Section on US87, Dalhart

- 3 inch asphalt overlay
- 5%RAS mixes: OT cycles=48; 96
- Cold weather
- Medium traffic



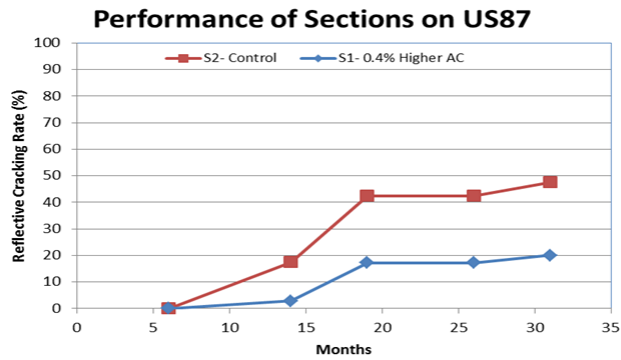
2.5 years after
May 10, 2013



Key Message:	RAP/RAS field test sections and performance
Interactivity:	Tell: This case demonstrates the impact of design density and extra 0.3 percent asphalt binder on cracking resistance of RAS mix.
Notes:	N/A

Test Section on US87, Dalhart

- 3 inch asphalt overlay
- 5%RAS mixes: OT cycles=48; 96
- Cold weather; Medium traffic






Key Message:	RAP/RAS field test sections and performance
Interactivity:	Tell: This case clearly demonstrates the use of higher design density and higher asphalt content can improve cracking resistance of asphalt mixes, even in the coldest climate in Texas.
Notes:	N/A

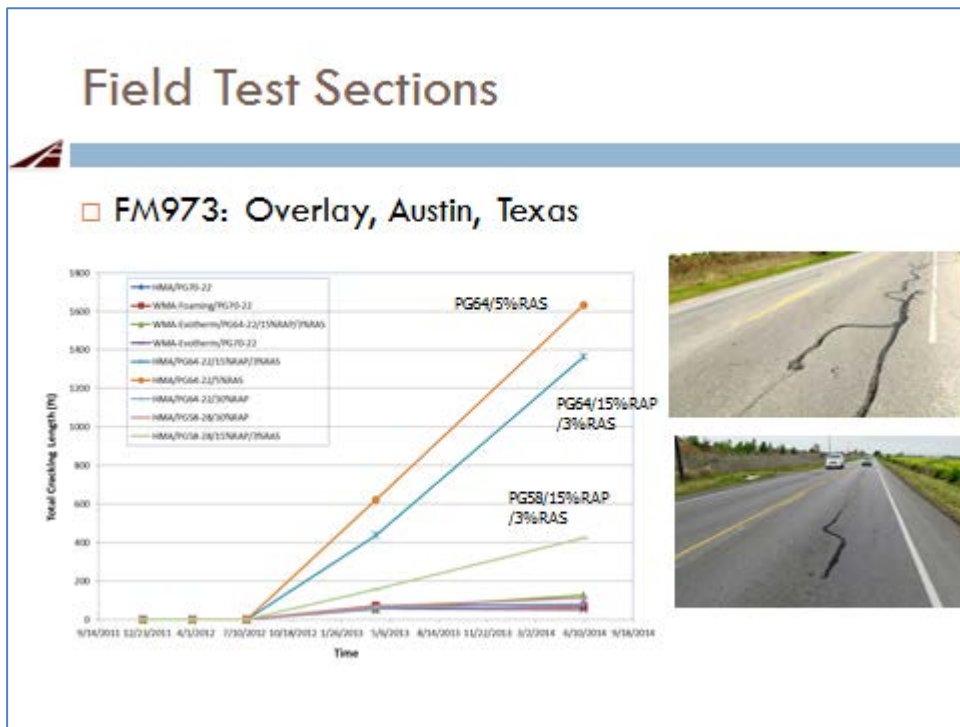
Field Test Sections

- Soft Binder
 - FM973: Overlay, Austin, Texas

Section	Type	Binder	RAP	RAS
1	HMA	70-22	0	0
7	WMA Foaming	70-22	0	0
8	WMA Evotherm	70-22	0	0
9	WMA Evotherm	64-22	15	3
3	HMA	64-22	15	3
4	HMA	64-22	0	5
2	HMA	64-22	30	0
5	HMA	58-28	30	0
6	HMA	58-28	15	3

Key Message:	RAP/RAS field test sections and performance
Interactivity:	Tell: A total of nine test sections with different RAP/RAS combinations were constructed on FM973, close to Austin, Texas. One of the purposes was to validate the effect of soft binder on improving cracking resistance of RAP/RAS mixes.
Notes:	N/A



Key Message:	RAP/RAS field test sections and performance
Interactivity:	Tell: The performance of the nine test sections clearly demonstrates that soft binder worked well to improve cracking resistance of RAP/RAS mixes.
Notes:	N/A

Field Test Sections and Performance

Test sections		Highway	Overlay/ new const.	Weather	Traffic MESAL	OT cycles	Performance
Amarillo	0%RAP	IH40 (severely cracked thick asphalt pavement)	4 inch/ overlay	Cold	30	95	3 yrs: 100% refl. cracking
	20%RAP					103	
	35%RAP					200	3 yrs: 57% refl. cracking
Pharr	0%RAP	FM1017-Very good support	1.5 inch/ new const.	Very hot	0.8	28	3yrs: overall - good conditions
	20%RAP					6	
	35%RAP					7	
Laredo	20%RAP	SH359-regular support	3 inch/ overlay	Very hot	1.5	3	3yrs: No cracking
Houston	15%RAP/ 5%RAS	SH146-Very good support	2 inch/new const.	hot	3.0	3	2.5yrs: No cracking
Dalhart	5%RAS	US87	3 inch/ Overlay	Cold	3.0	48/96	96 cycles-20% RCR; 48 cycles-50%RCR

Key Message:	RAP/RAS field test sections and performance
Interactivity:	Tell: This slide summarizes the performance of field test sections and compared with OT cycles. It indicates that performance of RAP/RAS mixes depends on pavement structure, climate, traffic, and material engineering properties. They could have similar or even better performance than virgin mixes if designed and used in suitable conditions.
Notes:	N/A

Rejuvenated RAP/RAS Test Sections

□ **Test sections:**

- APAC: 5 sections on SH31, Tyler, 6/14
- Anderson-Columbia: 5 sections on FM468, Laredo, 9/15
- Silva Construction: 4 sections on FM1463, Houston, 7/16

□ **Production and construction:**

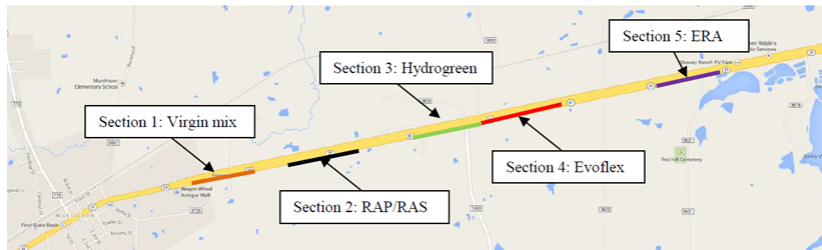
- no any problem encountered; all met density requirement



Key Message:	RAP/RAS/rejuvenator field test sections and performance
Interactivity:	Tell: This slide describes all rejuvenator test sections constructed in Teaxs.
Notes:	N/A

Field Performance of Rejuvenated RAP/RAS Test Sections in Tyler

- Virgin mix with PG70-22
- RAP/RAS mix with PG64-22
- RAP/RAS mix with PG64-22 and 2.6% Hydrogreen
- RAP/RAS mix with PG64-22 and 3.7% Evoflex
- RAP/RAS mix with PG64-22 and 2.0% ERA



Key Message:	RAP/RAS/rejuvenator field test sections and performance
Interactivity:	Tell: This is the first test sections with rejuvenators in Texas. A total of five sections listed in the slide were constructed on SH31 close to Tyler.
Notes:	N/A

Field Performance of Rejuvenated RAP/RAS Test Sections in Tyler

- Reflection cracking was observed on all sections including virgin mix section
- After 2.5 years, cracking are still tied



Key Message:	RAP/RAS/rejuvenator field test sections and performance
Interactivity:	Tell: The performance of the five test sections is discussed here.
Notes:	N/A

Field Performance of Rejuvenated RAP/RAS Test Sections in Tyler

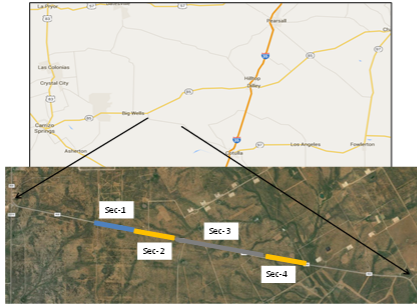
- Lessons learned from Tyler sections
 - Two-lift overlay: construct them at the same time
 - Mix aging: 2 hr aging for cracking is not enough



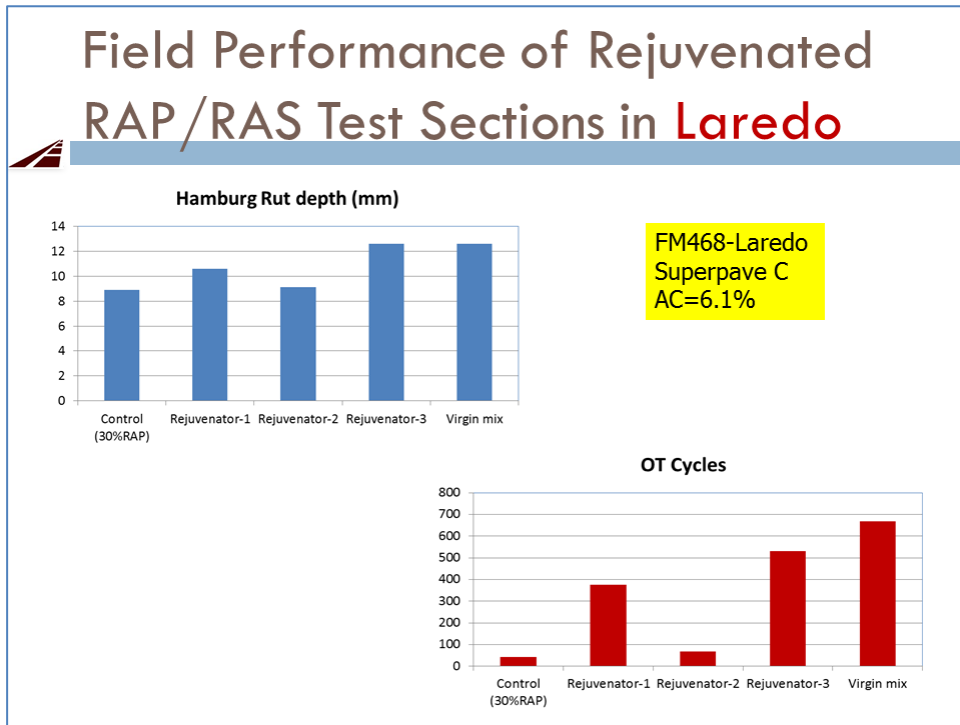
Key Message:	RAP/RAS/rejuvenator field test sections and performance
Interactivity:	Tell: This slide discusses two main lessons learned from SH31.
Notes:	N/A

Field Performance of Rejuvenated RAP/RAS Test Sections in Laredo

- Virgin mix with PG70-22
- 30%RAP mix with PG64-22
- 30%RAP mix with PG64-22 and 2.2% Road Science
- 30%RAP mix with PG64-22 and 3.0% Arizona Chemical
- 30%RAP mix with PG64-22 and 3.2% Hydrogreen



Key Message:	RAP/RAS/rejuvenator field test sections and performance
Interactivity:	Tell: Another five test sections were constructed on FM468 in Laredo District.
Notes:	N/A



Key Message:	RAP/RAS/rejuvenator field test sections and performance
Interactivity:	Tell: Laboratory Hamburg and OT test results of five mixes used in the field are presented in this slide. One lesson learned is that the rejuvenator has better effect when it is directly mixed with virgin binder. The direct spraying rejuvenator on the RAP materials turned out to be not that effective.
Notes:	N/A

Field Performance of Rejuvenated RAP/RAS Test Sections in Laredo

- After 15 months, all sections performed very well
 - The same virgin mix with PG76-22 was constructed on I35
- 30%RAP mix with PG64-22 and 3.2% Hydrogreen: Gone



April 8, 2016

Nov 16, 2016



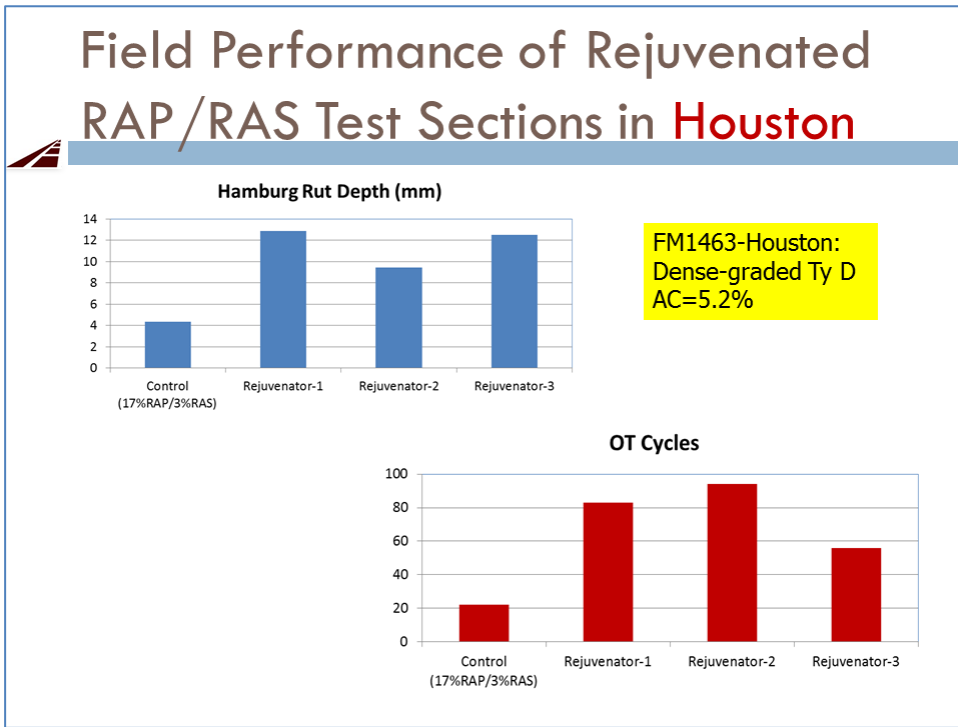
Key Message:	RAP/RAS/rejuvenator field test sections and performance
Interactivity:	Tell: This slide shows that all five test sections on FM468 performed well in the first 15 months.
Notes:	N/A

Field Performance of Rejuvenated RAP/RAS Test Sections in **Houston**

- 17%RAP/3%RAS mix with PG64-22
- 17%RAP/3%RAS mix with PG64-22 and 3.5% Arizona Chemical
- 17%RAP/3%RAS mix with PG64-22 and **4.0%** Sonneborn
- 17%RAP/3%RAS mix with PG64-22 and 7.5% Evoflex



Key Message:	RAP/RAS/rejuvenator field test sections and performance
Interactivity:	Tell: Another four test sections were constructed on FM1463 in Houston District.
Notes:	N/A



Key Message:	RAP/RAS/rejuvenator field test sections and performance
Interactivity:	Tell: Laboratory test results of plant mixes from FM1463 are discussed here.
Notes:	N/A

Field Test Sections and Performance

Lessons Learned from Field Test Sections

1. RAP/RAS mix can perform well at certain locations
2. One OT requirement cannot fit for all
3. Successful use of RAP/RAS mixes depends on
 - Weather/Traffic
 - AC overlay:
 - Overlay thickness, Existing pavement structure (AC/AC; AC/PCC)
 - Existing pavement conditions
 - New construction:
 - Pavement structure and which layer (surface, base, ...)
4. Design the mix for **project-specific service conditions**

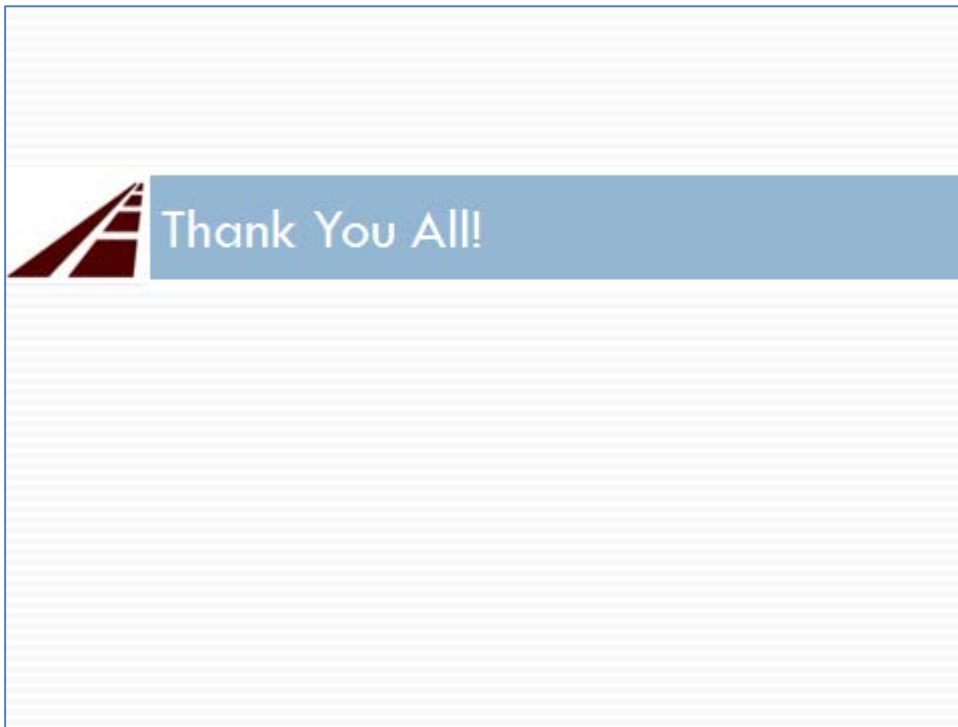
Key Message:	RAP/RAS/rejuvenator field test sections and performance
Interactivity:	Tell: This slide summarizes all the lessons learned from field test sections.
Notes:	N/A

Summary



- Best practices for RAS processing and stockpile management were developed
- RAP/RAS mix can perform well at certain locations
- Rejuvenators can improve cracking resistance of RAP/RAS mixes. Rejuvenators perform differently among 3 types; even within each type, its effectiveness varies
- 3-step balanced mix design approach is recommended for designing rejuvenated RAP/RAS mixes

Key Message:	Summary of the workshop
Interactivity:	Tell: This slide simply summarizes this workshop.
Notes:	N/A



Key Message:	Q/A time
Interactivity:	Tell: It's Q/A time.
Notes:	N/A

Training Evaluation Form

for participants in RAS Best Practices Trainings

Date: _____

Title and location of training:

Trainer:

Instructions: Please indicate your level of agreement with statements listed below in #1–7.

	Strongly Agree	Agree	Neutral	Disagree	Strongly Disagree
1. The objectives of the training were clearly defined.	0	0	0	0	0
2. The topics covered were relevant to me.	0	0	0	0	0
3. The materials distributed were helpful.	0	0	0	0	0
4. This training experience will be useful in my work.	0	0	0	0	0
5. The trainer was knowledgeable about the training topics.	0	0	0	0	0
6. The time allotted for the training was sufficient.	0	0	0	0	0
7. The meeting room and facilities were adequate and comfortable.	0	0	0	0	0

8. What did you like most about this training?

9. What aspects of the training could be improved?

10. Please share other comments here:

Thank you for your feedback!