

Guidelines for Utilization of Police Officers in Traffic Control and Enforcement on Urban Freeways [Presentation Slides]

Digitized by

Center for Transportation Research Library

The University of Texas at Austin

Austin, Texas



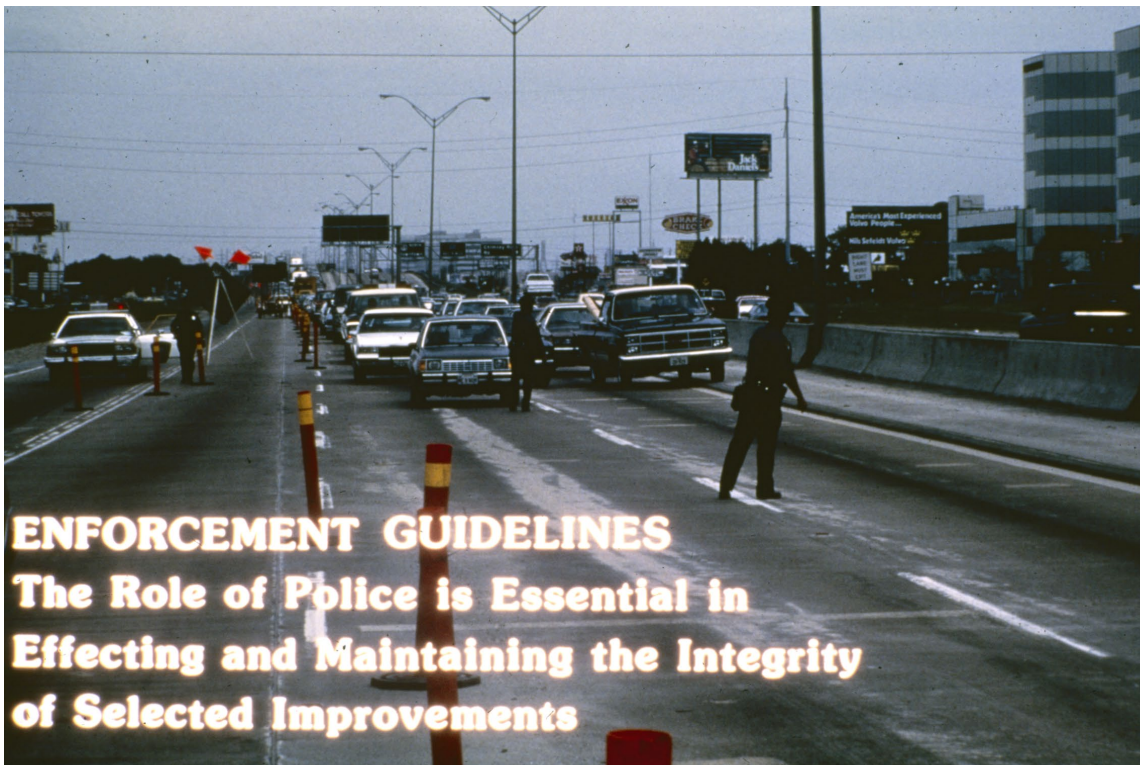
Digitized February 2024

TxDOT Research Project 0-410

"A Study of Traffic Enforcement Requirements for Highway
Maintenance, Construction, and Other Traffic Management
Functions"



Slide 1



Slide 2



Slide 3

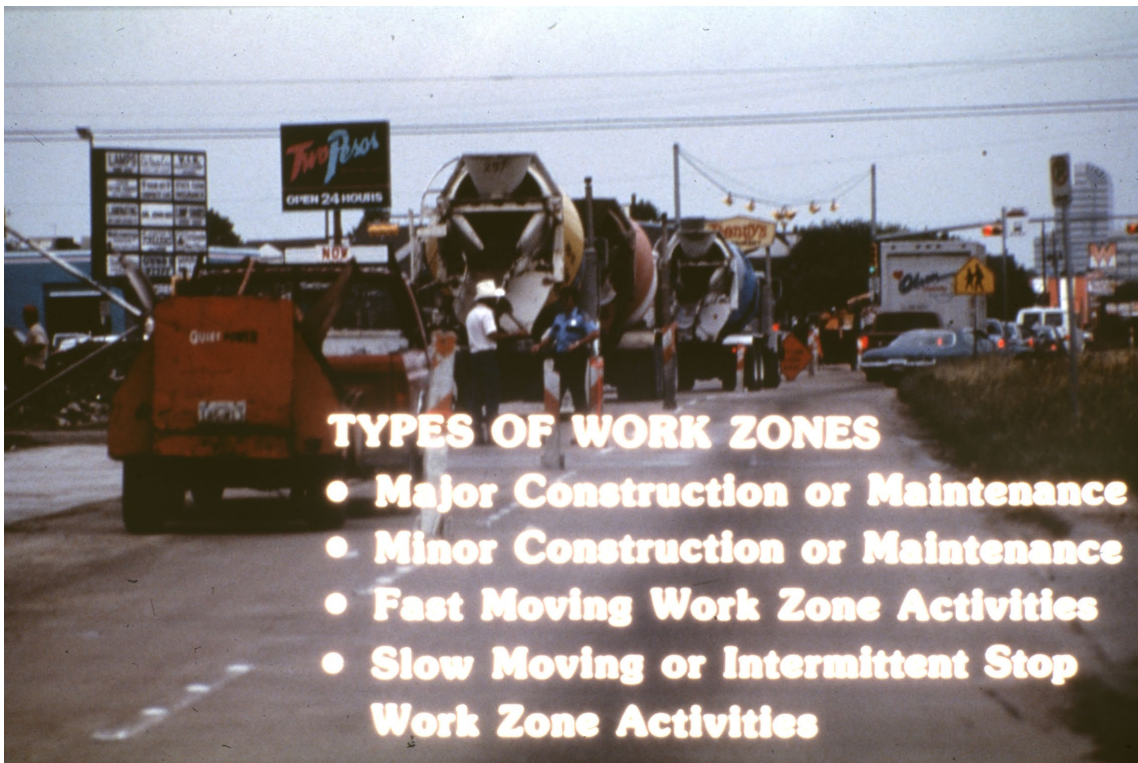


Slide 4



THE PRIMARY OBJECTIVE OF POLICE UTILIZATION IN WORK ZONES IS TO INSURE SAFETY OF THE PROJECT SITE

Slide 5



TYPES OF WORK ZONES

- Major Construction or Maintenance
- Minor Construction or Maintenance
- Fast Moving Work Zone Activities
- Slow Moving or Intermittent Stop Work Zone Activities

Slide 6



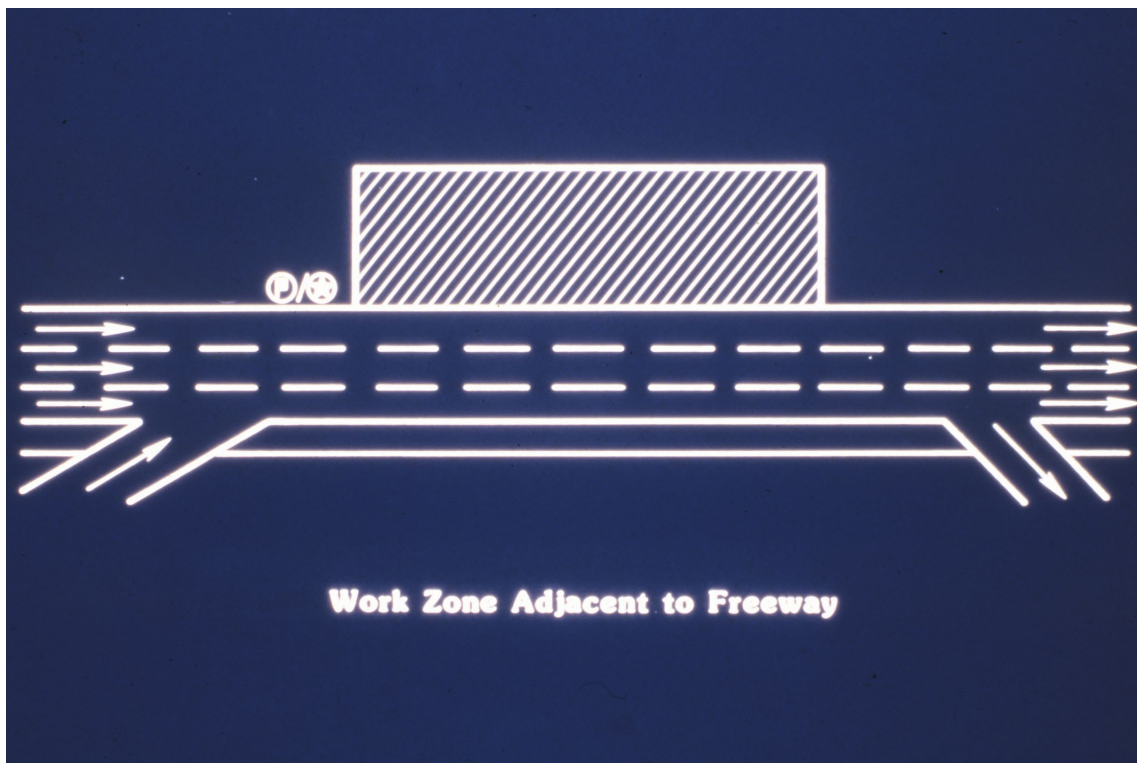
Slide 7

The symbol P/S indicates the possible location of either a flagman or a police officer or both depending upon specific site conditions and by the decision of the supervising project engineer.

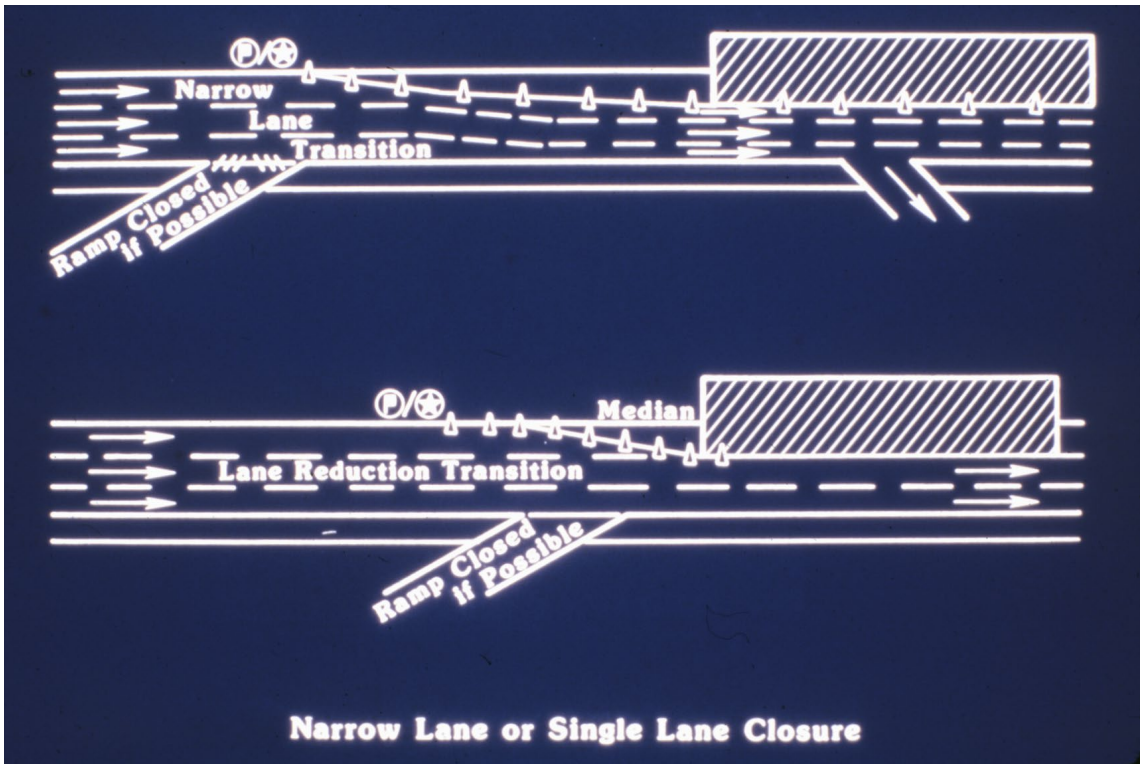
Slide 8

Traffic control plans depicted are for illustration purposes only and not to be assumed as standard or specification. In all cases, the MUTCD should be adhered to for location and placement of work zone traffic control devices.

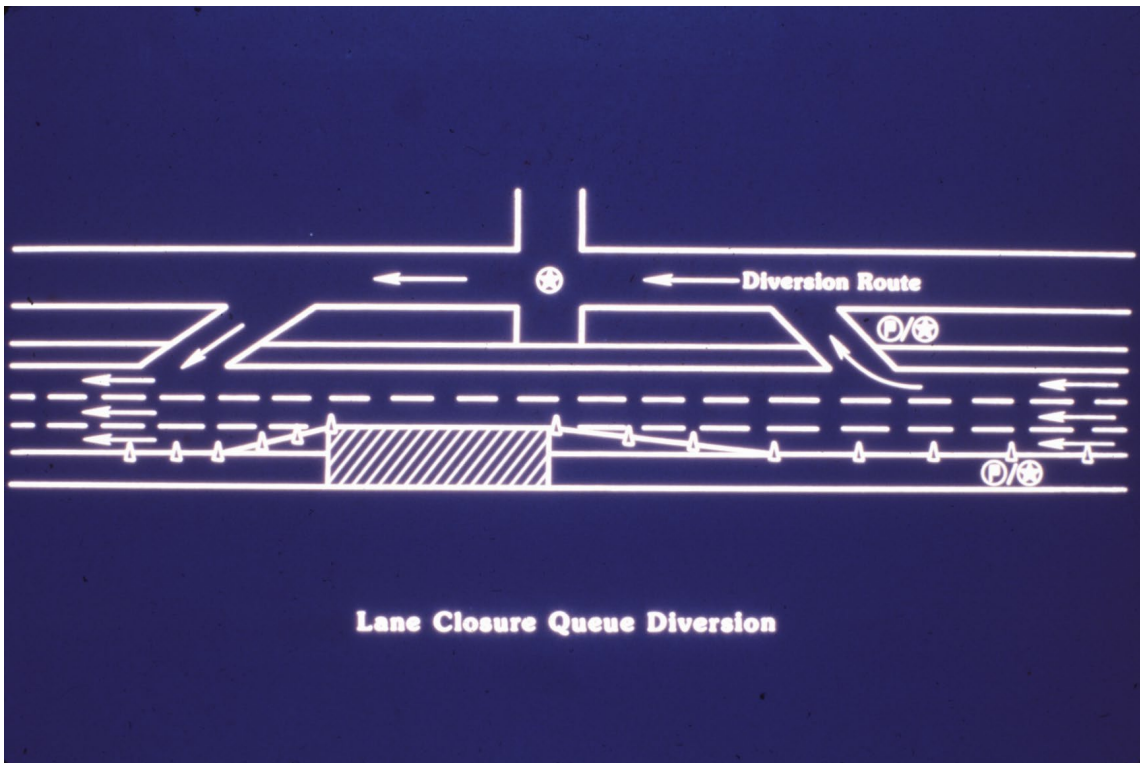
Slide 9



Slide 10



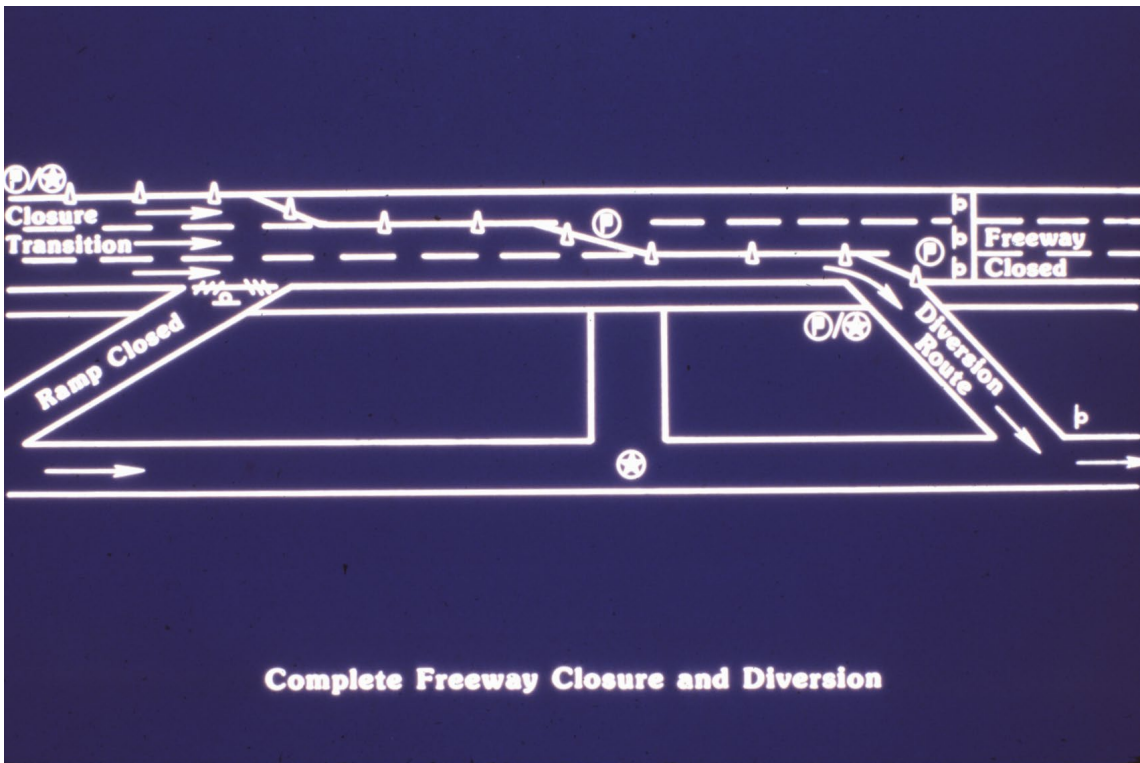
Slide 11



Slide 12



Slide 13



Slide 14



Slide 15



Slide 16



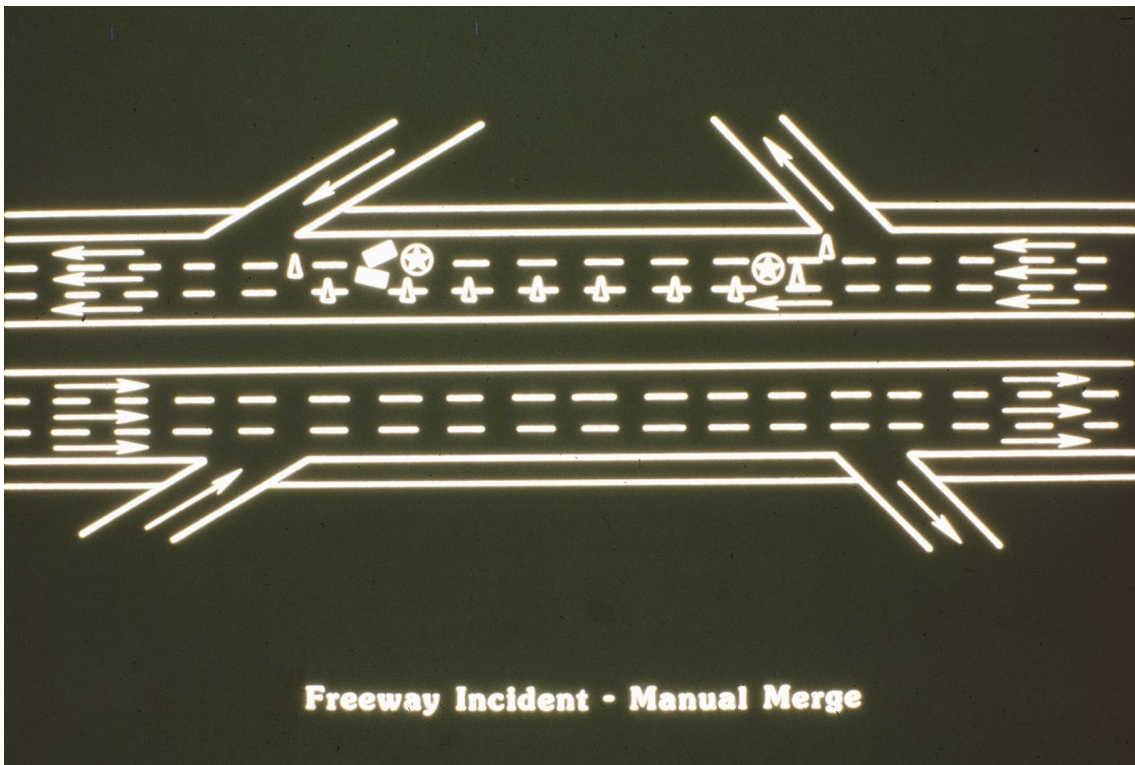
Slide 17



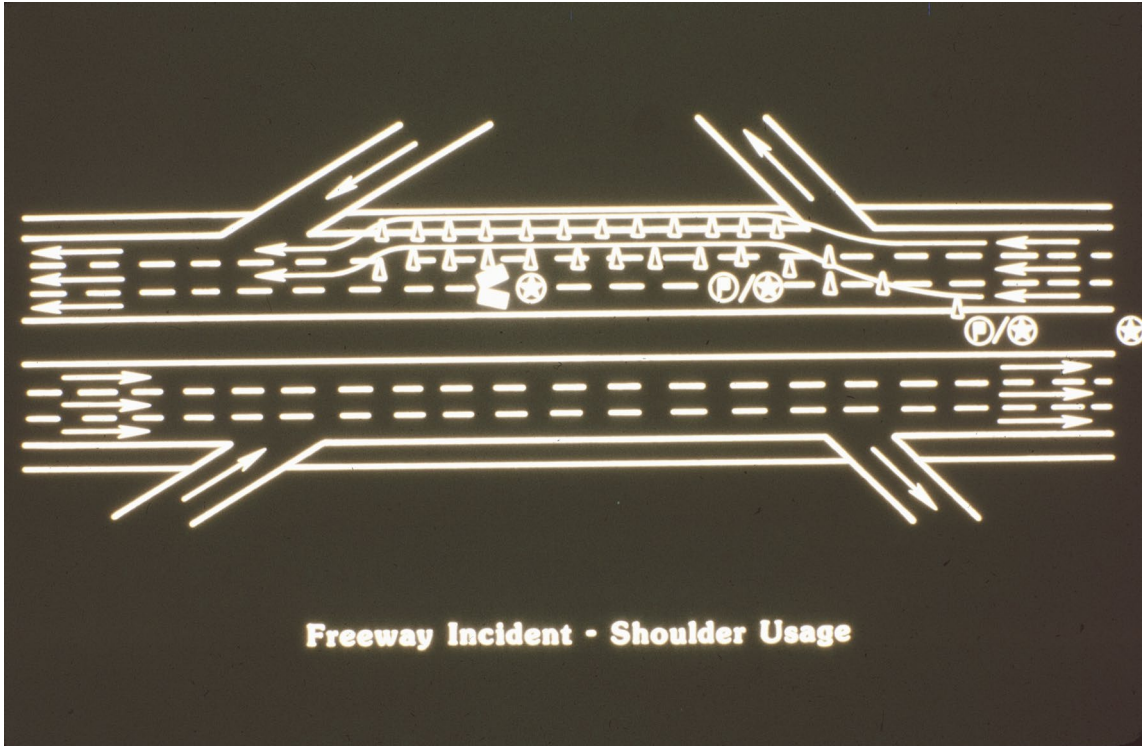
Slide 18



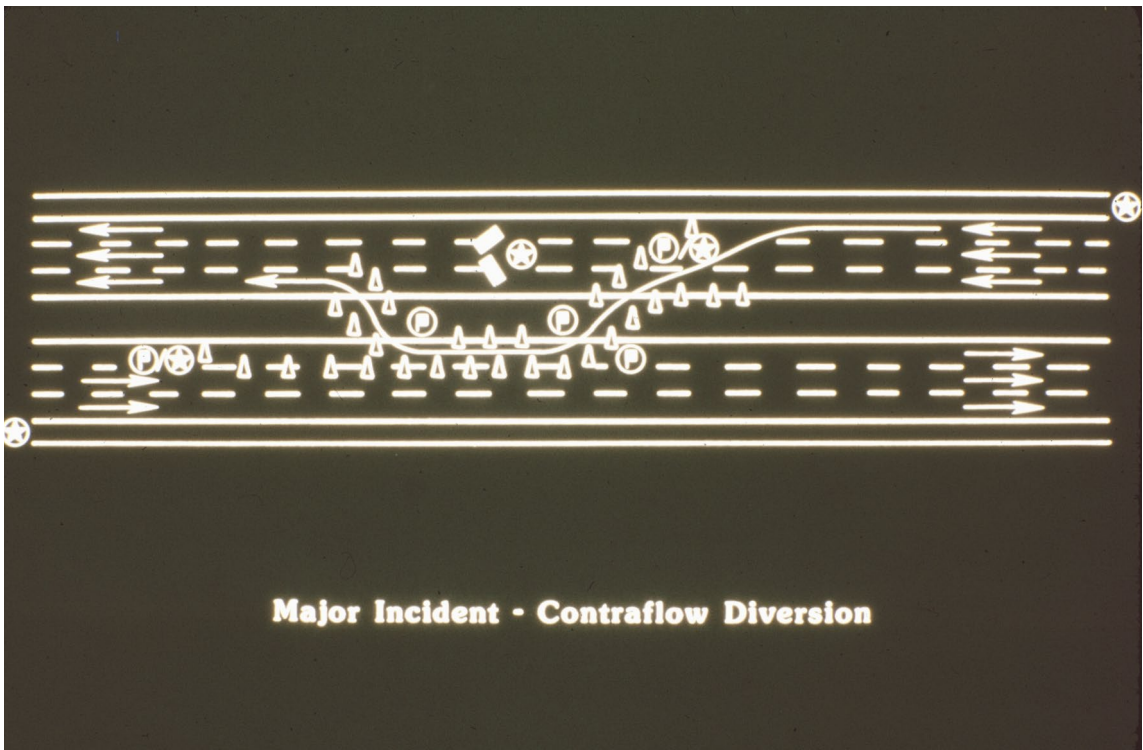
Slide 19



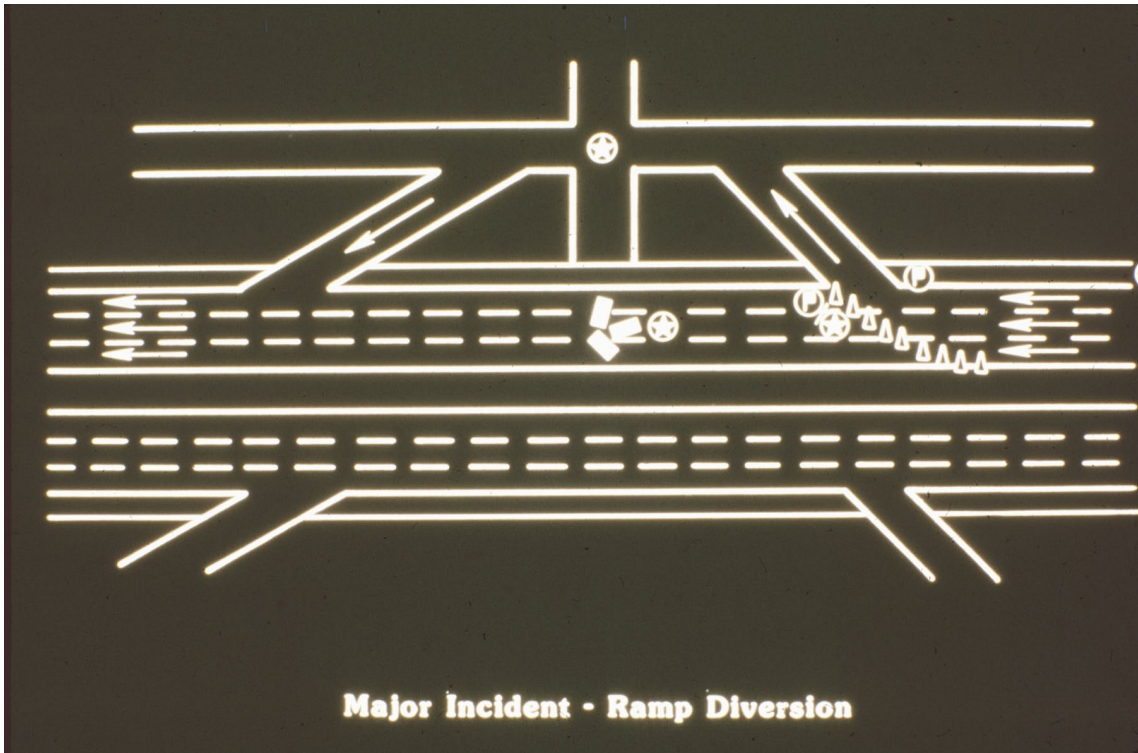
Slide 20



Slide 21



Slide 22



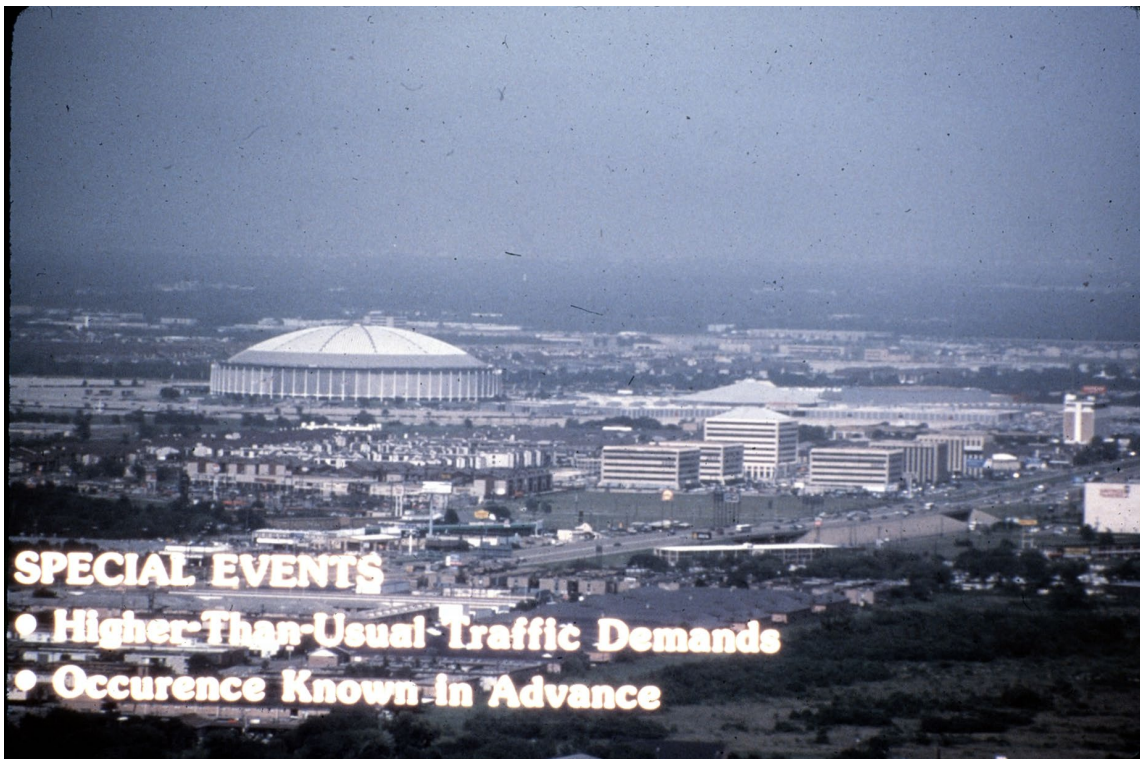
Slide 23



Slide 24



Slide 25



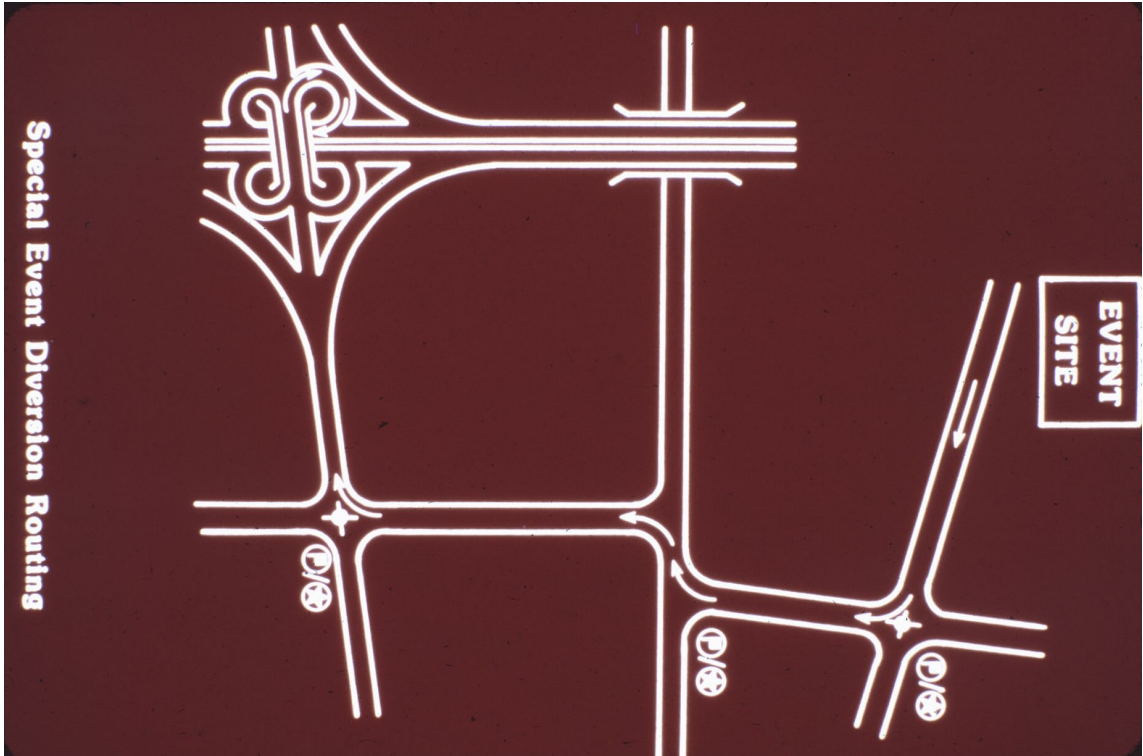
Slide 26



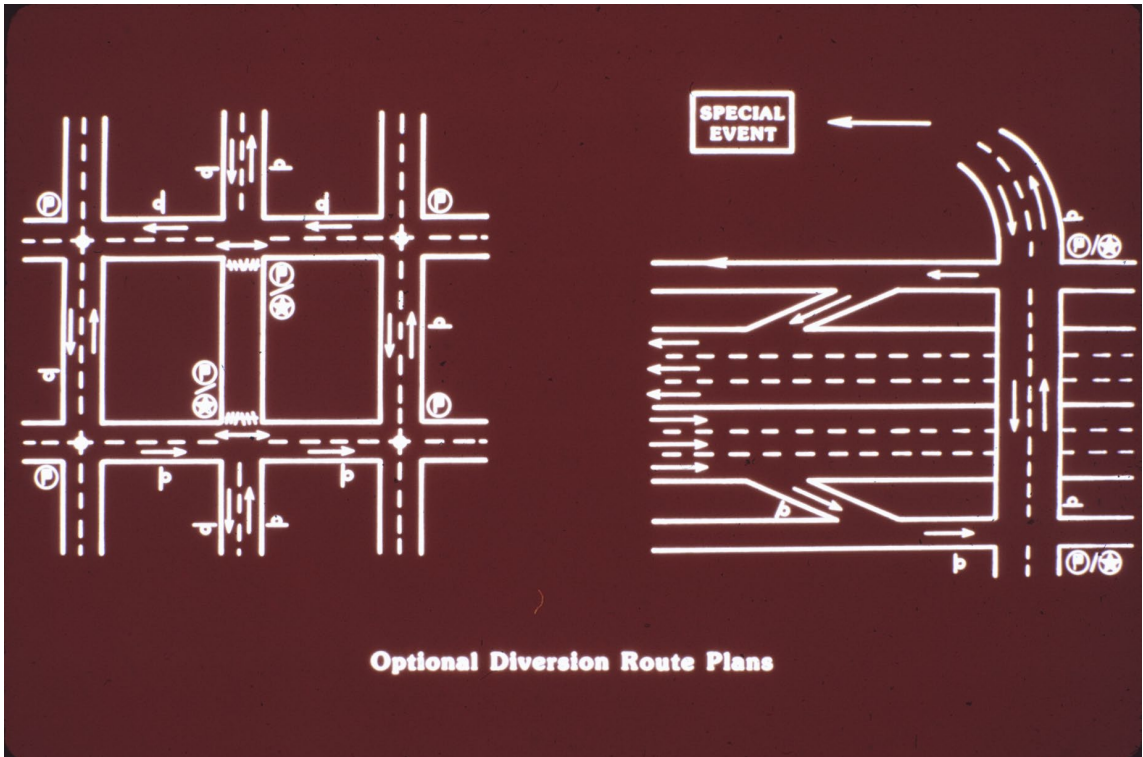
Slide 27



Slide 28



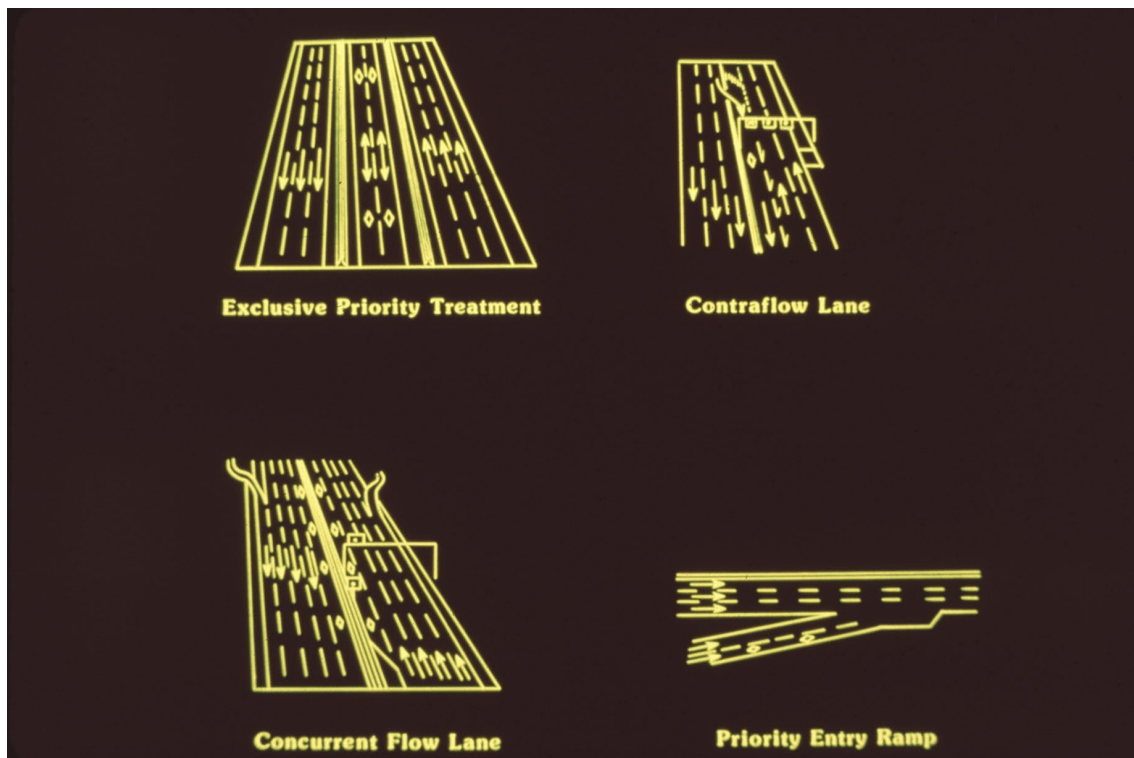
Slide 29



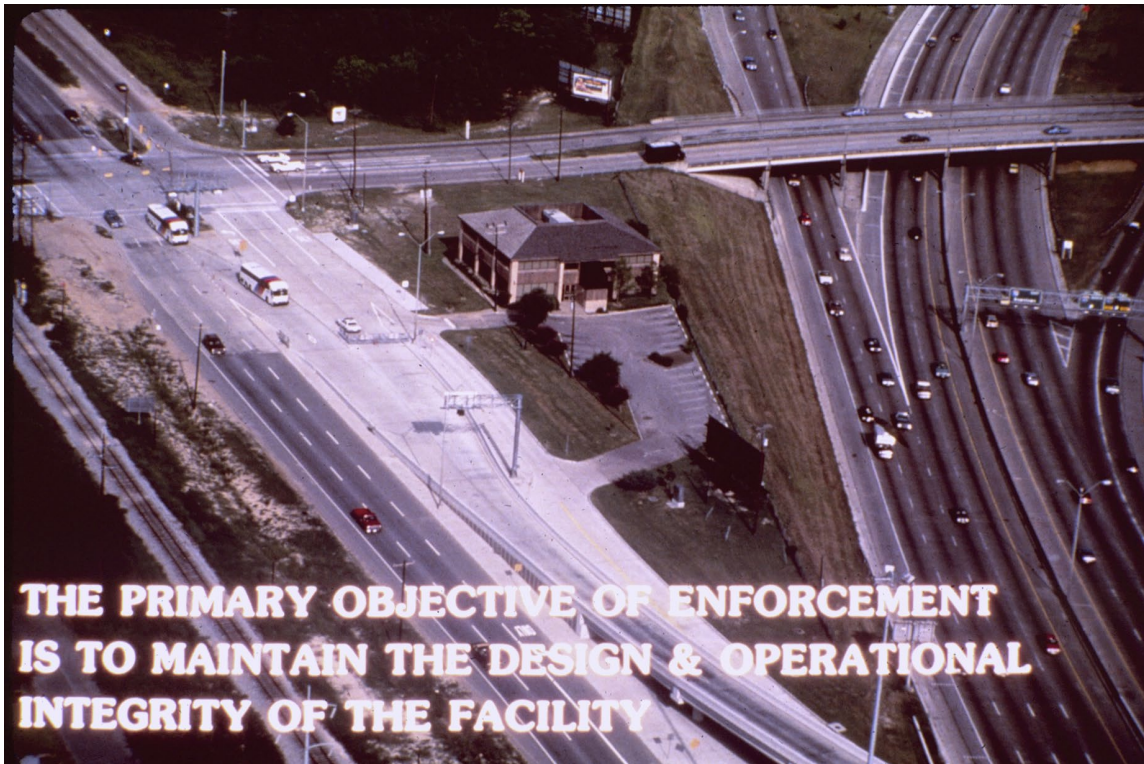
Slide 30



Slide 31



Slide 32



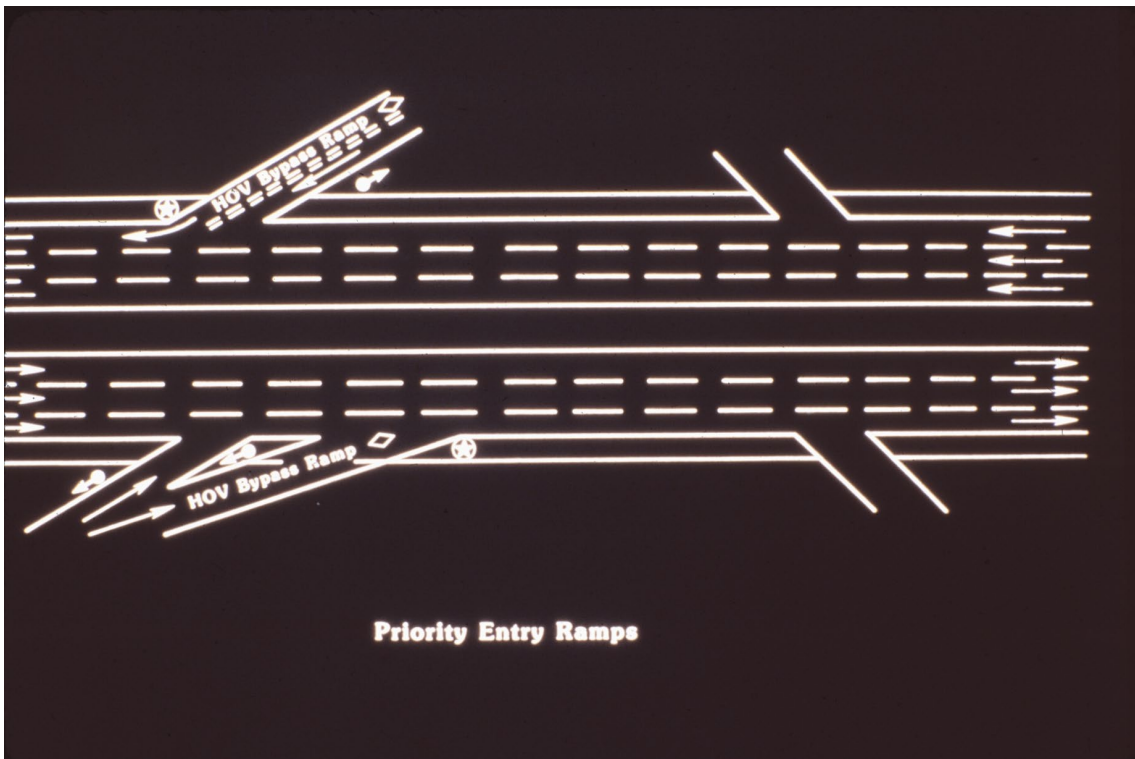
Slide 33



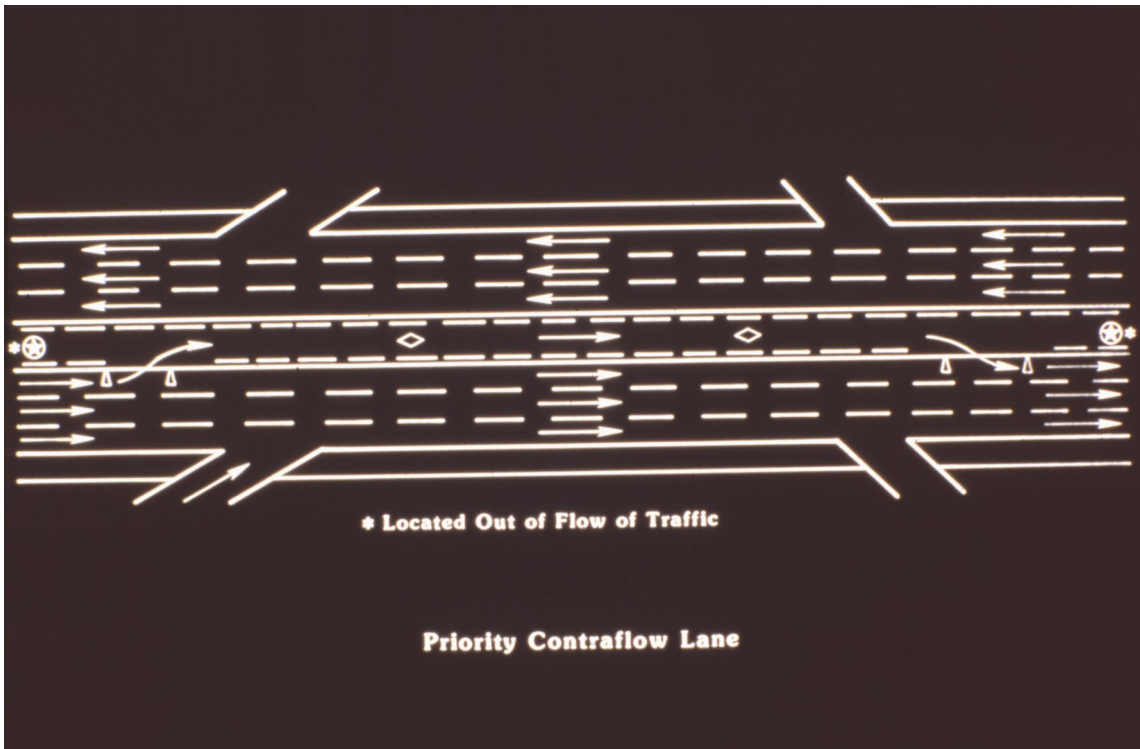
Slide 34



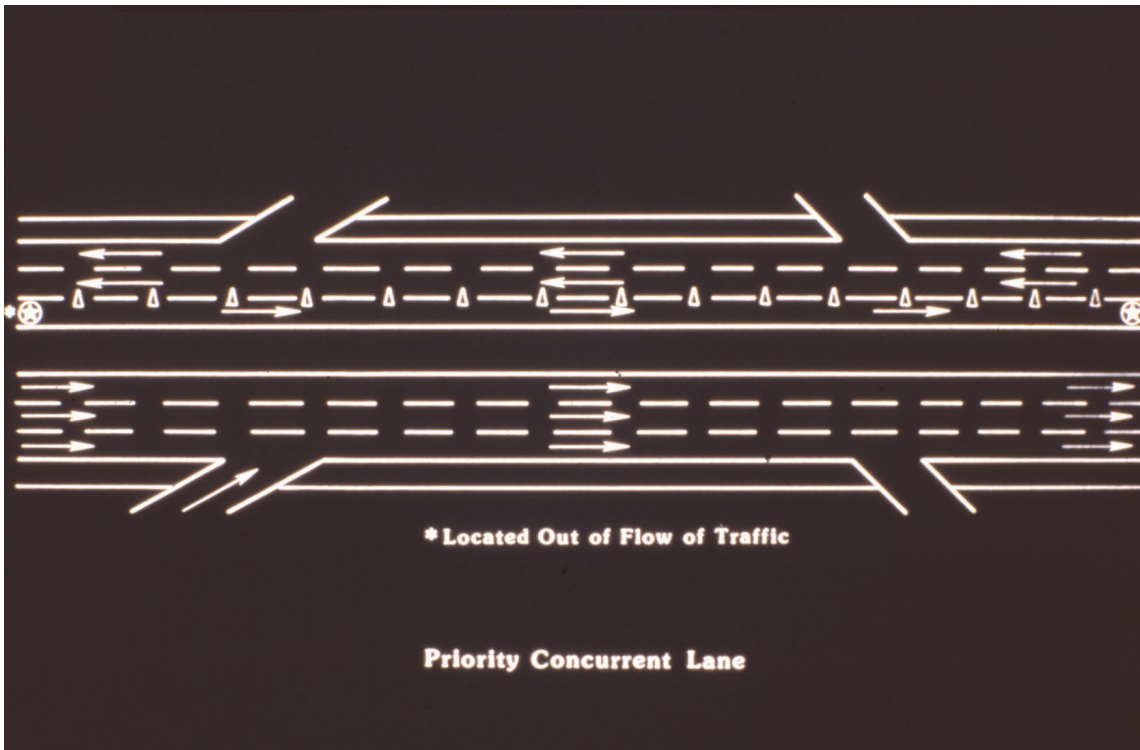
Slide 35



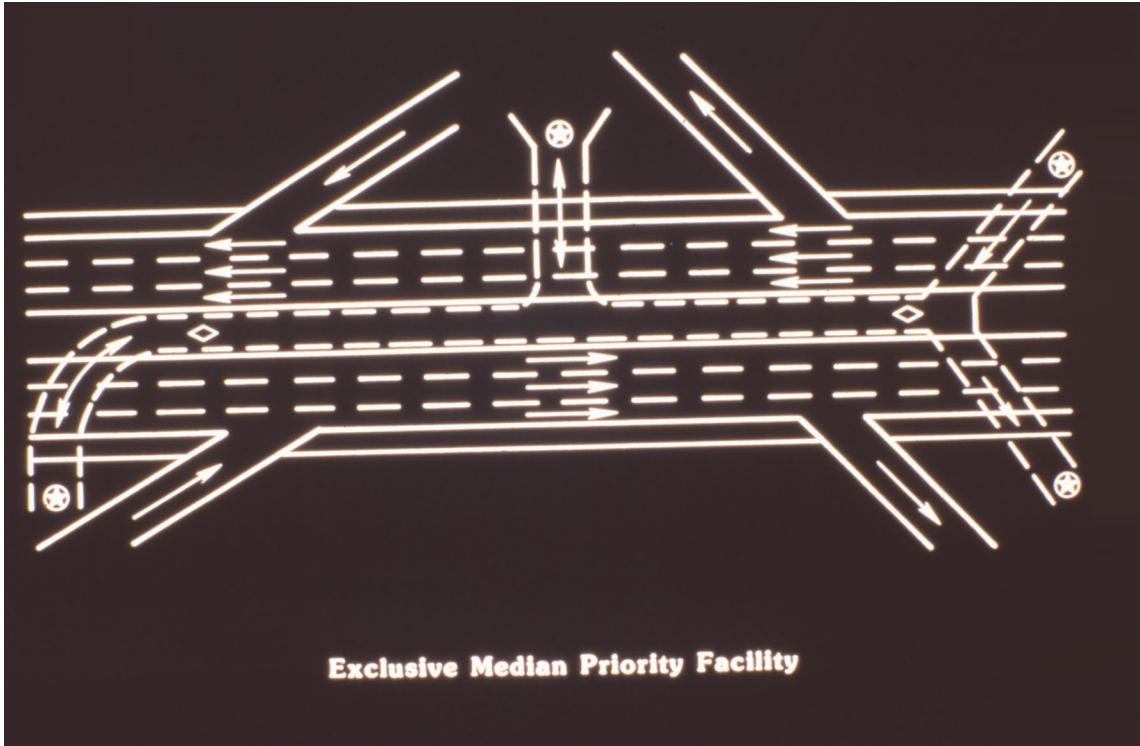
Slide 36



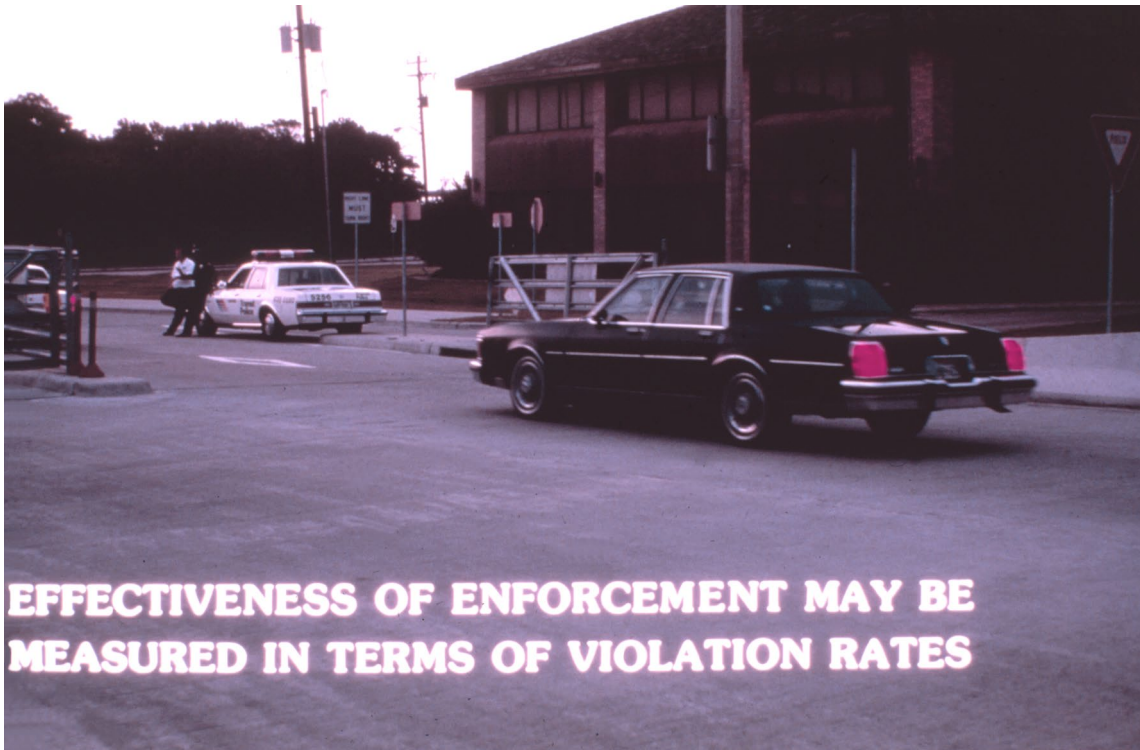
Slide 37



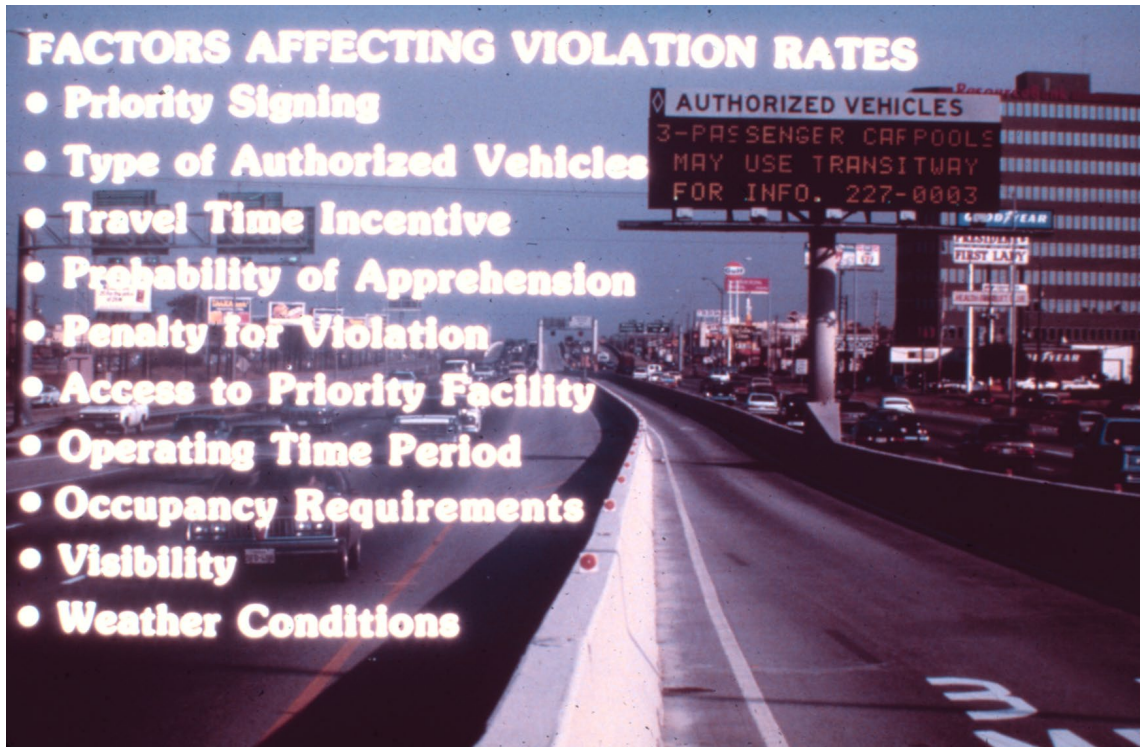
Slide 37A



Slide 38



Slide 39



Slide 40



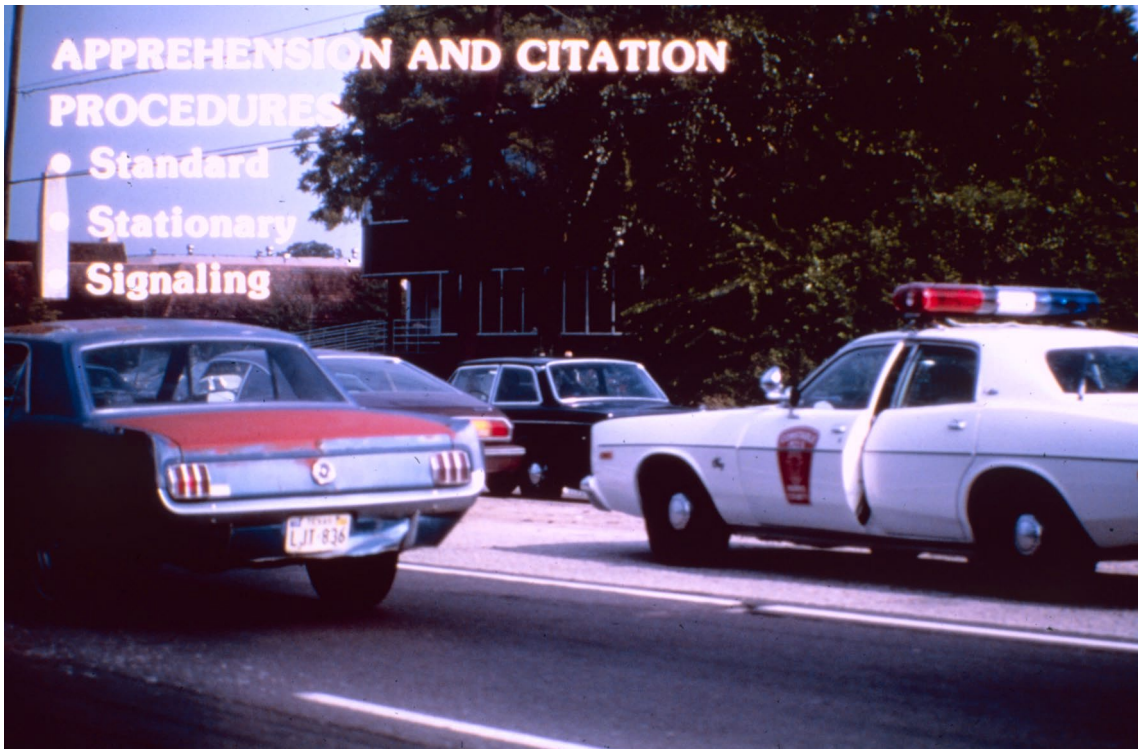
Slide 41



Slide 42



Slide 43



Slide 44



Slide 45



Slide 46