

For Loan Only:
CTR Library

UNIFIED WORK PROGRAM
FOR
TRANSPORTATION PLANNING
EL PASO URBAN AREA
EL PASO, TEXAS

June 1, 1976 - August 31, 1977

Participating Agencies
City of El Paso
El Paso County
District 24, Texas Department of
Highways and Public Transportation
West Texas Council of Governments

Prepared By:
Metropolitan Planning Organization Office
Department of Planning, Research & Development
City of El Paso, Texas

May 24, 1976

Preparation of this report was financially aided
by the U. S. Department of Transportation. Federal
Highway Administration under Section 112 of the
1973 Federal Highway Act.

UNIFIED WORK PROGRAM
FOR
TRANSPORTATION PLANNING
EL PASO URBAN AREA
EL PASO, TEXAS

June 1, 1976 - August 31, 1977

Participating Agencies
City of El Paso
El Paso County
District 24, Texas Department of
Highways and Public Transportation
West Texas Council of Governments

Prepared By:
Metropolitan Planning Organization Office
Department of Planning, Research & Development
City of El Paso, Texas

May 24, 1976

AUG 12 2014

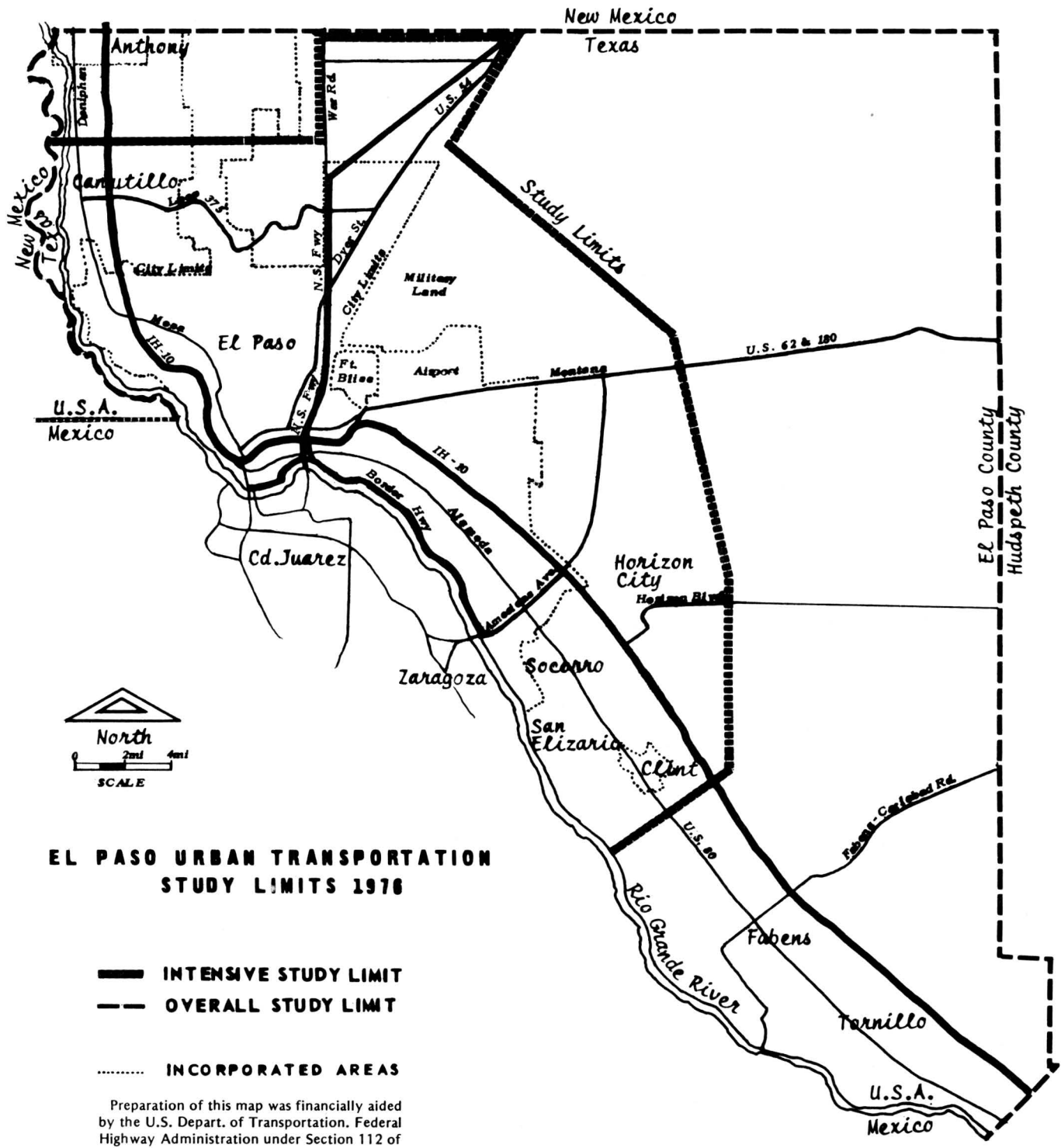
Preparation of this report was financially aided
by the U. S. Department of Transportation. Federal
Highway Administration under Section 112 of the
1973 Federal Highway Act.

TABLE OF CONTENTS

El Paso Location Map	ii
El Paso Urban Transportation Study Area	iii
I. Introduction	1
II. Organization and Management	3
Organization Chart	6
III. Status of Urban Transportation Planning	7
IV. Work Program	
Activity 100 Program Administration and Management	9
Activity 200 Continuing Phase: Data Inventory & Projection	20
Activity 300 Special Studies: Initial Phase	34
Activity 400 Plan Selection and Programming	50
V. Work Program by Agency Participation and Cost Estimates	58
VI. Work Program by Proposed Funding Sources	61
VII. Work Program by Time Elements	64
VIII. Work Program by Agency Roles	65
Appendix A: Policy Committee Meeting	69
Appendix B: Steering Committee	70



EL PASO LOCATION MAP



**EL PASO URBAN TRANSPORTATION
STUDY LIMITS 1976**

- INTENSIVE STUDY LIMIT**
- - - OVERALL STUDY LIMIT**
- INCORPORATED AREAS**

Preparation of this map was financially aided by the U.S. Dept. of Transportation, Federal Highway Administration under Section 112 of the 1973 Federal Highway Act.

I. INTRODUCTION

To be effective, transportation planning must be cooperative, continuous and comprehensive. Co-operation assures that the governmental jurisdictions within the planning area have appropriate roles in the planning process. Plans are maintained on a continuing basis so that they may retain validity in the face of change. Plans must be comprehensive to address the needs of the total community and to exploit all available technology to satisfy these needs.

In three separate legislative acts the Congress has provided for transportation planning. Title 23 U. S. Code provides for the planning of highways. The Urban Mass Transportation Act of 1964 provides for mass transportation planning. The Airport and Airways Development Act of 1970 provides for air transportation planning. These statutes provide that planning for one mode be co-ordinated with the other modes and with the comprehensive planning for the urban area.

The Unified Work Program is a single document which identifies all transportation and transportation related planning activities that will be undertaken within the metropolitan area within an annual period. Additionally the program identifies the agency which will carry out these activities. It estimates the costs of carrying out the activities and it identifies the sources of funds to pay these costs. The Unified Work Program is also used as a basis for application for Federal transportation planning funds.

The Planning Area

El Paso's urban transportation planning area is co-extensive with the Standard Metropolitan Statistical Area, i.e. El Paso County.

Practically considered, the bulk of the urban development within the County is concentrated within and adjacent to the City of El Paso. The area designated for intensive study is defined to be that area which is expected to be urbanized by the target year for planning. This intensive study area is shown on the map on page iii.

For the purpose of urban road, street, and highway planning the area outside the intensive study area will be treated as an external traffic generator. Planning for the less urbanized part of the County outside the intensive study area is provided for in the Upper Rio Grande Regional Transportation Plan published by the Texas Department of Highways and Public Transportation.

The Target Year

The target year of long range planning (20 years) for the El Paso Urban Area is the year 2000. The target year was selected in anticipation of completing in 1977 or 1978 a major review of the current (1990) transportation plan. The short range planning anticipates the needs of 1980. The next capital improvement projects are to be selected for fiscal year 1977.

The Products of Unified Work Programming

Unified work programming seeks to integrate planning for the several modes of transportation to attain efficiency, to avoid duplication and to exploit the advantages of the different modes of transportation for the benefit of the total community.

The immediate product of a unified work program should be planning which is more effective than if it were done independently by the separate agencies responsible for the different modes of transportation. The ultimate product of the Unified Work Program process is a schedule or program of capital and non-capital transportation improvements to be implemented locally with State and Federal funding assistance as needed and as available. The value of such improvements rests on what they bring to the community.

II. ORGANIZATION AND MANAGEMENT

The citizens of the El Paso Urban Transportation Planning Area are responsible for identifying the goals and objectives of transportation planning for the area. In some cases this identification is explicit as in the public's participation in the Community Development Program or a public meeting regarding the transportation plan. More frequently these goals and objectives are reflected in the consensus of the elected officials in the area.

The Continuing Phase Agreement

The initial transportation study under current Federal laws for the City of El Paso was published in 1969 under the provisions of the Federal Highway Act of 1962. The original agreement was signed in 1963 between agencies of the City of El Paso, El Paso County and the State of Texas. In 1969, transportation planning was made a continuing process by an additional agreement between the original

signatory parties. Later it became desirable to place responsibility for general policy guidance solely in a committee of elected officials. As a result, a provision for a revised transportation planning committee structure was incorporated in a new Continuing Phase Agreement dated June 26, 1973. This agreement currently controls transportation planning in El Paso. A complete copy of this agreement is contained in Volume 2 Revised Operations Plan, 1973, El Paso Transportation Study.

The Policy Advisory Committee

In the El Paso planning area, an elected official of the City of El Paso, an elected official of El Paso County, an elected official of the City of Anthony and all State Senators and Representatives whose areas include the El Paso planning area and who elect to serve are members of the Policy Advisory Committee. The United States Representative for the area serves as an ex-officio member of this Committee. This Committee provides general policy guidance for the transportation planning process in substantive matters.

The Policy Advisory Committee reviews, revises as needed and adopts the transportation plan as a basis for programming capital and non-capital improvements. This Committee acts to obtain acceptance of the Plan as a basis for Federal and State funding of capital improvements.

At least annually this Committee discusses the status of planning with the public using an open and well-publicized meeting as a forum.

Current membership on the Policy Advisory Committee is indicated at Appendix A.

The Steering Committee

The Steering Committee provides routine, primarily procedural, guidance to the transportation planning process. The Steering Committee is composed of elected officials or their designated representatives and others representing various planning disciplines, different transportation modes, and specific interest groups. The membership of the Steering Committee is indicated at Appendix B.

The Executive Committee of the Steering Committee

The Executive Committee of the Steering Committee was appointed by the Chairman of the Policy Advisory Committee at the first meeting of the Policy Advisory Committee after its structural revision in 1973. The Executive Committee provides day to day interpretation of policy matters for the planning staff, and reviews items requiring action by the Steering Committee and Policy Advisory Committee. The Chairman of the Executive Committee is the Director of Planning, Research and Development for the City of El Paso. This arrangement helps to integrate transportation planning with other elements of comprehensive planning for the City.

The Metropolitan Planning Organization

The Metropolitan Planning Organization is an areawide planning agency designated by the Governor of the State to develop or assist in developing multi-modal transportation plans; to ensure that transportation and other comprehensive planning are successfully co-ordinated and integrated; and to be the recipient of planning funds allocated by Section 112 of the Federal Aid Highway Act of 1973, by Section 9 of the Urban Mass Transportation Act of 1964 and by Section 13 of the Airport and Airway Development Act of 1970.

The City of El Paso has been designated the Metropolitan Planning Organization by the Governor of Texas. The City established the MPO Office within the Department of Planning, Research and Development. A staff member has been made MPO Officer.

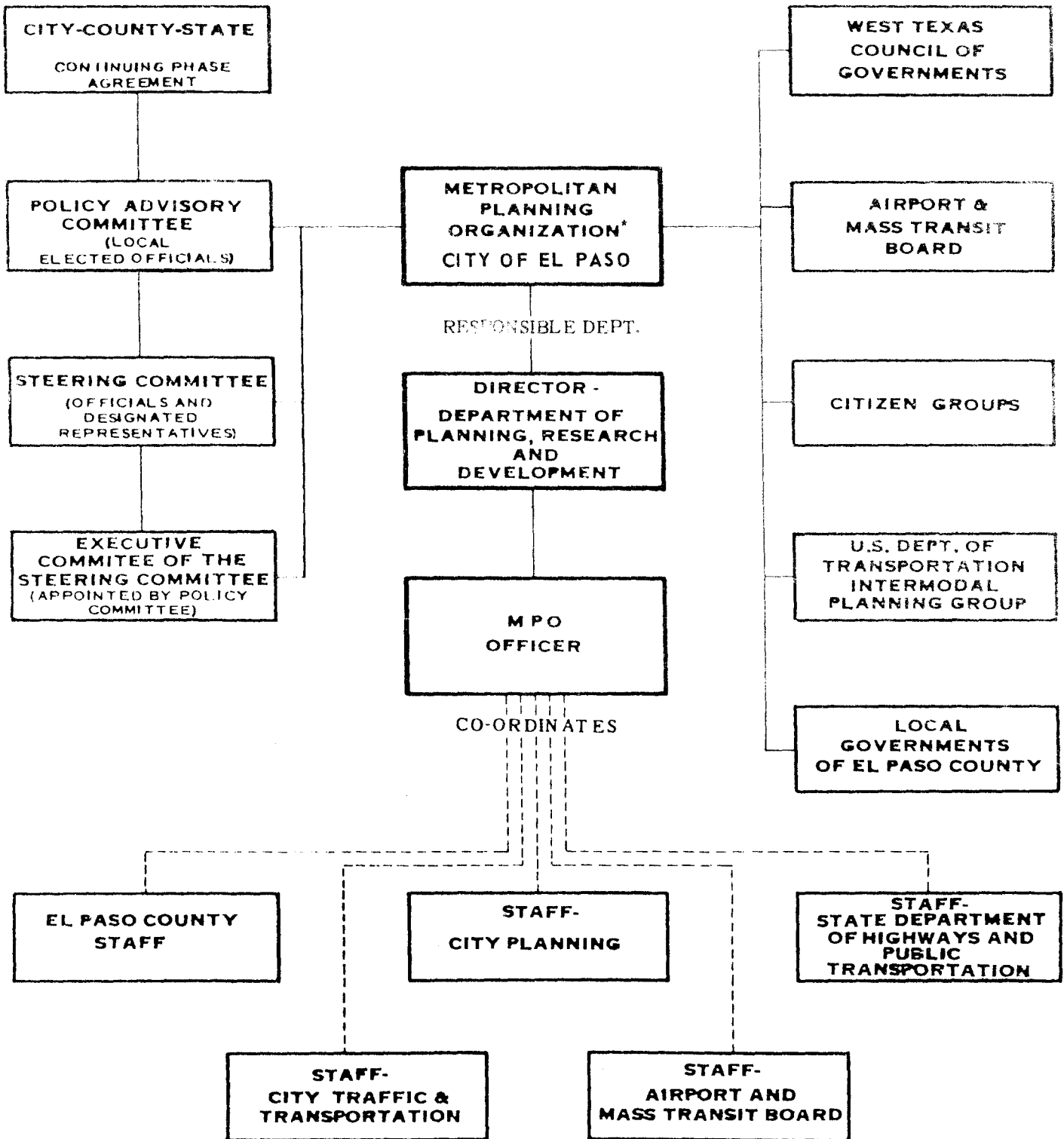
The MPO Officer is to furnish leadership in co-ordinating the transportation planning effort and to serve as a point of contact for State and Federal agencies with transportation planning interests. The MPO Officer also provides liaison to the West Texas Council of Governments in connection with review and comment procedures under O.M.B. Circular A-95.

The current MPO designation expires on August 31, 1977. It may be renewed to cover a two year period. The City also has a contract with the State for receipt of 112 Planning funds. This contract expires August 31, 1976 and will be re-negotiated.

One of the tasks in the coming year will be the revision of existing agreements to incorporate the MPO role and duties. The operating elements will also be revised to reflect new planning requirements and new agency responsibilities.

An organization chart on the following page shows the relationship among various agencies with transportation responsibilities.

**EL PASO URBAN AREA
TRANSPORTATION PLANNING ORGANIZATION CHART**



* Designated by Governor

III. STATUS OF URBAN TRANSPORTATION PLANNING

A Level II (Major) Review of the El Paso Urban Transportation Plan began in 1975. The objective is to prepare a multi-modal transportation plan which anticipates major travel demands for the year 2000. The last major re-assessment of the plan was completed in 1970. (Volume 6 1990 Transportation Plan). The 1990 Plan is the current adopted plan used for programming long-range system improvements.

During 1975, major inventories of the economic indices - housing, income, employment, population - were begun. A review of existing transportation facilities, terminal and transfer facilities, accident studies and travel times was begun. The City of El Paso hired a consultant (Wilbur Smith and Associates, Houston Office) to update the Short Range Transit Development Program and prepare a long-range transit plan. The City also decided to implement the recommendations of the Transit Development Program and purchase the assets of the three private American-owned bus companies operating in El Paso.

The outlook for work in 1976 and 1977 is as follows: The inventory of transportation facilities will be completed. Traffic engineering improvements will be studied and recommended. The basic determinants of travel (economic indices listed above) will be projected by serial zone to the year 2000.

Travel demands will be projected between zones. A mode split model will be applied by the consultant in co-ordination with the State Department of Highways and Public Transportation to predict transit trips and vehicular trips.

The trips produced will be distributed to the alternate future highway and transit systems. Recommended levels of service and needed capital improvements for highways and transit will be produced for public discussion and evaluation. Following an evaluation of recommended future transportation systems, a year 2000 plan will be adopted.

It should be noted that other comprehensive planning efforts are also underway in the El Paso area. Co-ordination of these plans and programs with transportation planning steps will be maintained through the MPO Officer.

A privately sponsored Goals for El Paso program is nearing completion of Phase I: Definition of Goals. In 1976 Phase II: Implementation of Goals, will be undertaken.

A preliminary study of problems and opportunities for improvement of the Central Business District has been completed by an architecture/urban planning association, Staten, Pierce, Lacey and the Crane Design Group.

Also in 1976-77, the City of El Paso is committed to a major update of its Comprehensive Plan which was adopted in 1968. The West Texas Council of Governments will be completing the Housing Element of the Regional Plan as it applies to El Paso County.

In so far as is practical, public hearings required by each of the planning programs will be jointly held so as to present a comprehensive view of future plans and needs.

Several small area studies are also anticipated for 1976-77: the East-West Corridor Study and the CBD Transportation Study. The products of these studies will be short-range transportation system management improvements (TSM) which can be implemented readily.

ACTIVITY	100	PROGRAM ADMINISTRATION AND MANAGEMENT
ELEMENT	101	PROGRAM MANAGEMENT

Objective:

To provide for scheduling of work tasks, budget preparation, expenditure monitoring, preparation of requests for payment, preparation of applications for transportation planning funds.

To provide for day to day administration of transportation planning grants; i.e. payroll time sheets, supply ordering and disbursement, other standard administrative tasks.

Work To Be Undertaken:

Information on Unified Work Program elements and tasks will be provided to staff assigned to the various projects. A system of accounting for time and materials expended on each work element will be devised and administered.

Questions about the work tasks, funding program requirements, accounting procedures, etc. will be answered.

The completion and co-ordination of various tasks will be monitored. Expenditure of funds for these tasks will be monitored.

Requests for payment of FHWA, UMTA, FAA and Office of Traffic Safety funds will be prepared and processed. Reimbursements received will be checked and credited to the appropriate budget account.

Rules and regulations on the use and administration of federal and state transportation planning funds will be monitored.

Product:

Administration and control of funds for transportation planning efforts.

Responsibility:

The MPO Office will be responsible for managing the use of FHWA Section 112 funds for transportation planning.

The MPO Office will provide technical assistance to other agencies and monitor the use of grant monies to assure consistency with the objectives of the Unified Work Program.

The Airport and Mass Transit Department will manage the use of UMTA Section 9 funds.

The State Department of Highways and Public Transportation will monitor and check request for payment of FHWA Section 112 funds and will check applications for UMTA Section 3 and Section 5 Capital Grants.

The County of El Paso will be responsible for managing the Governor's Office of Traffic Safety Grant.

The approval and revision of the work tasks and budgets themselves rest with the Steering and Policy Committees.

ACTIVITY	100	PROGRAM ADMINISTRATION AND MANAGEMENT
ELEMENT	102	PROGRAM CO-ORDINATION

Objective:

To co-ordinate the planning efforts of various agencies to assure a unified multi-modal plan for transportation system improvements.

To monitor planning requirements of state and federal agencies in order to provide for compliance.

Work To Be Undertaken:

Day to day planning efforts of various agencies will be co-ordinated. Periodic informal and formal meetings of agencies involved will be held.

The current legal Agreements and Operations plan in effect will be reviewed and revised as necessary to include: the role of the MPO; the responsibility for new planning activities required; revised organization arrangements to accomodate transit planning and operations by the City; and new Office of Management and Budget Regional Review requirements (A-95 Review)

A new multi-year Prospectus for planning work will be prepared and used as a basis for developing the annual Unified Work Program.

Rules and regulations affecting transportation planning will be monitored. Changes in methods and emphasis will be made as required.

The Steering Committee and Policy Committee will be informed periodically about the findings of the planning tasks. Guidance will be sought as needed in determining the appropriate level of planning effort and emphasis.

Planning efforts of other groups and agencies such as the Goals for El Paso, the City of Juarez, the Mayor's Office, the Judge's Office and West Texas Council of Governments will be monitored. Any emerging concerns or plans which might affect transportation planning efforts will be considered.

The transportation planning effort is a process involving many public agencies with various statutory responsibilities. This process must be capable of adapting to changing conditions and attitudes and of responding to concerns of private and quasi-public groups and individuals.

Product:

Day to day co-ordination of planning efforts of various participating agencies and other public and private groups.

Responsibility:

The MPO Office will have primary responsibility for providing staff level co-ordination of planning efforts.

Other participating agencies will provide technical assistance.

The Steering and Policy Committees will have responsibility for providing general guidance. The Policy Committee will provide for co-ordination of transportation planning efforts among elected officials.

The MPO Office will also serve as an information center for the public and will refer specific technical planning problems or questions to the appropriate agency or group.

ACTIVITY	100	PROGRAM ADMINISTRATION AND MANAGEMENT
ELEMENT	103	POLICY DEVELOPMENT

Objective:

To provide policy direction for the transportation planning process which is based on broad goals of the community and region.

Work To Be Undertaken:

Policy will be made by a Policy Advisory Committee composed of local elected officials. Public hearings will be held to inform the public of planning issues and alternatives and receive public reaction. Revisions in goals, objectives and priorities can be made.

A Steering Committee appointed by the Policy Committee will provide routine guidance. Members of the Committee will include City, County and State agency heads, representatives of private groups and citizen groups. The Steering Committee provides an additional forum for discussion and evaluation of transportation policies.

The MPO Office will provide staff support for the Policy and Steering Committees. Other participating agencies will provide technical assistance to the Policy and Steering Committees.

Product:

Single co-ordinated policy direction and staff work to achieve integrated, multi-modal transportation planning based on community goals in the El Paso urban area consistent with regional goals.

Responsibility:

A Policy Committee composed of local elected officials will establish policies, goals and objectives.

A Steering Committee composed of representatives designated by the Policy Committee will provide routine guidance. The Executive Committee of the Steering Committee will provide day to day direction as required.

The MPO Office will provide staff assistance. Other participating agencies will provide technical assistance.

ACTIVITY	100	PROGRAM ADMINISTRATION AND MANAGEMENT
ELEMENT	104	PROGRESS REPORTS

Objective:

To increase public understanding and support of transportation planning.

To report progress in various work elements as required by funding agencies.

Work To Be Undertaken:

A report for wide, public distribution will be prepared to include the following: the current transportation plan; the transportation improvement plan; significant events of the past year; plan changes with justifications; maps indicating progress during year toward implementation of plan; summaries of key characteristics of the area which corroborate validity of forecasts; organization, representation, function and responsibilities of participating agencies.

Other reports on various planning elements will be prepared as required.

Products:

A concise non-technical, easily understood account of the 1975 planning effort for public distribution.

Progress reports required by Federal and State transportation agencies.

Responsibility:

The Policy Advisory Committee will approve the public report as a condition for its release.

The Annual Report content will be prepared in draft form by the agencies with primary responsibility for that subject area. The report will be compiled and printed by the State Dept. of Highways & Public Transportation.

The Report will be reviewed by the Steering Committee

Agencies with modal planning grants will prepare inter-agency progress reports for use by the Federal or State agency providing the grant;

The MPO Office will report on progress for Section 112 funded projects as directed by the Steering Committee;

The Airport and Mass Transit Department staff will prepare progress reports on UMTA funded studies as required by UMTA regulations;

The County will prepare progress reports on its study funded by the Governor's Office of Traffic Safety as required by the Governor's Office.

ACTIVITY	100	PROGRAM ADMINISTRATION AND MANAGEMENT
ELEMENT	105	SERVICE TO PUBLIC

Objective:

Provide transportation planning data and assistance:

- a. To those responsible for plan preparation or implementation.
- b. To other users of such data.

Work To Be Undertaken:

Data will be collected and maintained current for study elements to the extent appropriate to the Level II re-appraisal phase of transportation planning.

Product:

- a. Centralized file of officially published transportation planning data, e.g. various volumes of the Study, reports, news-letters.
- b. De-centralized files of "in-process" data, e.g. traffic counts, land use changes, accident statistics, facility inventory, travel time.

Responsibility:

The State Department of Highways and Public Transportation will maintain a stock of published data.

The agency having primary responsibility for the basic study element as assigned in the Continuing Phase Agreement will collect, compile, prepare and distribute in-process data pertinent to that element.

The MPO Office will provide general information on transportation planning efforts.

ACTIVITY	100	PROGRAM ADMINISTRATION AND MANAGEMENT
ELEMENT	106	REVIEW AND COMMENT (A-95 REVIEW)

Objective:

Satisfy requirements of OMB Circular A-95 and V.A.C.S. 1011-m. Revised.

Work To Be Undertaken:

Evaluation, review and co-ordination of all applications requesting Federal and State assistance related to and involving transportation in the El Paso Urban Area.

Product:

Evaluation, review and co-ordination of all applications mentioned above.

Responsibility:

The responsibility for review and comment will be that of the West Texas Council of Governments.

Preparation of the application for project and program review shall be the responsibility of the sponsoring agency.

ACTIVITY	100	PROGRAM ADMINISTRATION AND MANAGEMENT
ELEMENT	107	FISCAL YEAR 1978 UNIFIED WORK PROGRAM

Objective:

To provide co-ordination of transportation planning activities in the El Paso Urban Area.

Indicate probable sources of financial resources for funding these activities.

Work To Be Undertaken:

The objectives of transportation planning will be defined.

The current status of planning will be described.

The organization for transportation planning will be described.

Technical and administrative activities will be described.

Responsibility for these activities will be assigned.

Available supportive funding will be estimated.

Product:

Unified Work Program for Fiscal Year 1978.

Responsibility:

Technical and administrative activities and cost estimates will be described by that agency with primary responsibility for the activity as assigned by the Continuing Phase Agreement.

The designated MPO (City of El Paso) shall compile, edit, and publish the program with staff support of other agencies as needed.

The Steering Committee shall review and the Policy Advisory Committee shall approve and adopt the Unified Work Program.

ACTIVITY	100	PROGRAM ADMINISTRATION AND MANAGEMENT
ELEMENT	108	IN-SERVICE TRAINING

Objective:

To provide opportunities for staff members of participating agencies to attend seminars, workshops and short courses for the purpose of learning current methods, techniques and issues in transportation planning.

Work To Be Undertaken:

Appropriate staff members of participating agencies will be nominated by their agencies in consultation with the Metropolitan Planning Organization to attend short courses on transportation planning offered by the U. S. Department of Transportation or the Texas Department of Highways and Public Transportation.

Other workshops and seminars will be arranged by the MPO as requested by participating agencies.

Responsibility:

The MPO will forward information on available seminars and workshops to participating agencies and will forward nominations of candidates to attend U. S. Department of Transportation short courses to that agency through the State.

ACTIVITY	200	CONTINUING PHASE: DATA INVENTORY AND PROJECTION
ELEMENT	201	ECONOMIC INDICES

Objective:

To compile and project economic data for input to the mathematical models used to describe and predict trip generation.

Work To Be Undertaken:

Data will be compiled by serial zone* and projected to the year 2000 as follows:

- Task 201.01 Number of Housing Units.
- Task 201.02 Mean Family Income
- Task 201.03 Types of Employers, i.e. industry, business enterprise and number of Employees by type.
- Task 201.04 Population data will be compiled on the most disaggregated basis which is economically feasible. Population will be used to corroborate the data indicated above.

Data will be maintained current on a monthly basis by use of electronic data processing. Sources such as City tax records, building permits and R. L. Polk Directory Data will be used for areas inside the City limits. Aerial photos, field surveys and County tax records will be used for areas outside the City limits.

Product:

A collection of data which accurately describes selected indices of present and future economic activity.

Responsibility:

The City of El Paso (Department of Planning, Research and Development) is responsible for this study element.

*A serial zone is a geographic area smaller than a census tract. The serial zone is treated in Transportation modeling as an entity with uniform characteristics.

ACTIVITY	200	CONTINUING PHASE:	DATA INVENTTORY AND PROJECTION
ELEMENT	202	LAND USE STUDY	

Objective:

To determine current land use and to estimate land use within the Study Area in the year 2000.

Work To Be Undertaken:

Existing land use will be determined from City tax office records, recent aerial photos, field inspections and building permits and certificates of occupancy.

For input to trip generation models, classifications will be aggregated, i.e., residential, commercial, industrial, vacant, other.

The reporting unit for land use will be the serial zone.

Within serial zones, the total parcels devoted to the aggregated uses will be given in acres.

Future land use will be projected based on population projections, economic indices, availability of land, and the official comprehensive plan for the City.

Product:

Current land use data for modeling current trip attractions.

Future land use data for modeling future trip attractions.

(Note: Residential land is treated primarily as a trip producer. This is input to models in terms of housing units which are treated as Element 201.01.)

Responsibility:

The City (Department of Planning, Research and Development) has primary responsibility for this element. Assistance as needed will be sought from the County and West Texas Council of Governments.

Task 203.06 Inventory of all bridge structures at least 20 feet in length including construction type data, load limits, roadway width and surface type, structure condition.

Product:

A listing of all transportation facilities available for use in making recommendations for short-range improvements programming including low-capital and non-capital improvements to the transportation system.

Responsibility:

Initial preparation and maintenance of the inventories listed above shall be by the City of El Paso (Department of Traffic & Transportation) with assistance from the State Department of Highways and Public Transportation and other operating agencies.

Preparation of initial inventory of mass transit facilities will be made by a consultant. Maintenance of this data will be the responsibility of the Airport and Mass Transit Dept.

Note: This element is an update to 1975 of information contained in the Plan Re-evaluation, Volume 6, Parts 1 and 2, 1970.

The Consultant will develop and apply a post-distribution mode split model to estimate transit trips.

The State will co-ordinate with the Consultant to assure consistency of trip interchange predictions for transit and vehicular trips.

Responsibility:

The City of El Paso (Traffic and Transportation) will prepare and maintain information on major freight terminals.

The City of El Paso (Airport and Mass Transit Department) will prepare and maintain information on mass transit terminals and private para-transit facilities.

The State Department of Highways and Public Transportation will provide technical assistance on all these tasks.

ACTIVITY	200	CONTINUING PHASE: DATA INVENTORY AND PROJECTION
ELEMENT	206	FINANCIAL RESOURCES

Objective:

To estimate the amount and source of funds required to produce the improvements recommended by the short-range improvement plan including the annual element thereof.

Work To Be Undertaken:

Sources will be identified by funding jurisdiction and fund type.

Anticipated allocations to the El Paso Urban Area will be listed.

Trends of expenditures for transportation will be compiled according to funding sources.

Product:

A guideline defining the upper limit of a financially feasible short-range improvement program.

A limit for the costs of improvements for inclusion in the annual work element.

A limit for the costs of transportation planning.

Responsibility:

The City shall identify amount, source and controls on City and UMTA funds.

The Texas Department of Highways and Public Transportation shall identify the amount, source, and controls on State Highways and Public Transportation and FHWA funds.

The County shall identify the amount, source and controls on County funds.

The MPO Office shall maintain current information on all funding programs available from various State and Federal agencies which may be used to implement transportation plans.

ACTIVITY	200	CONTINUING PHASE: DATA INVENTORY AND PROJECTION
ELEMENT	207	SOCIAL, ENVIRONMENT AND ECONOMIC IMPACT

Objective:

To assure that planned transportation improvements, either individually or collectively, produce no unacceptable effects on society, the environment or the economy.

Work To Be Undertaken:

Individual project impacts will be assessed and impact statements or negative declarations will be processed as appropriate. Beneficial impacts will be identified.

Complete alternate systems will be evaluated with respect to impacts.

(Federally required determination of consistency with State's Implementation Plan to maintain air quality is included.)

Product:

Identification of social, economic and environmental effects of transportation plans and transportation improvements on community, groups and individuals. Appraisal of effects in terms of benefit or detriment.

Responsibility:

Proponent agency shall be responsible for project assessments, statements or declarations.

The State Department of Highways and Public Transportation Study Office shall prepare assessments for complete systems with staff assistance of other participating agencies, including the Texas Air Control Board as required.

West Texas Council of Governments will conduct review and comment upon assessment under A-95 procedures.

The MPO Office shall provide technical assistance for project assessment and system assessments as required.

The Policy Advisory Committee will review the impact statement and will determine whether any plan or project should be implemented. It will be their responsibility to determine when the anticipated effect of a plan or project is unacceptable.

The responsible Federal Agency (FHWA, UMTA, FAA, EPA) will also review impact assessments and report their findings to the local or State sponsoring agency.

The State Department of Highways and Public Transportation will carry out time-speed studies on Interstate Highway 10 and major State and Federal routes in El Paso.

The City of El Paso (Airport and Mass Transit Dept) will maintain data on route times and headways for intracity bus services.

ACTIVITY	200	CONTINUING PHASE: DATA INVENTORY AND PROJECTION
ELEMENT	209	MAJOR TRAFFIC GENERATOR STUDY

Objective:

To study the short-range impact of major new traffic generators on existing transportation system operations.

To identify traffic engineering requirements and transit routing changes needed to meet major changes in land use.

Work To Be Undertaken:

Detailed studies will be made of traffic impacts of proposed major traffic generators including: El Paso Community College, Valle Verde Campus; Santa Teresa Country Club; West Town Regional Shopping Center; expansion and upgrading of Zaragosa International Bridges as an industrial/commercial port of entry.

Existing and anticipated traffic patterns will be identified. Traffic counts will be made and trip attraction and production will be estimated.

Travel time speed and delay studies of the affected streets will be conducted.

Traffic engineering improvements will be recommended.

The need for transit services will be estimated. Route changes, new routes and bus stop loading areas will be recommended as appropriate.

Product:

Studies of traffic engineering requirements and transit service needs of new major traffic generators.

Responsibility:

The City (Traffic & Transportation Dept) will assess the traffic engineering requirements for new major generators.

The City (Airport and Mass Transit Dept) will monitor these studies to plan for transit services.

The State Department of Highways and Public Transportation will provide technical assistance as requested.

ACTIVITY	300	SPECIAL STUDIES: INITIAL PHASE
ELEMENT	301	BI-NATIONAL TRANSPORTATION

Objectives:

To monitor trends in international border crossings and needed improvements or additional bridges.

To co-ordinate transportation planning with appropriate agencies in Ciudad Juarez, Mexico.

Work To Be Undertaken:

Monthly customs and immigration reports on border crossings (north-bound) will be monitored to identify trends.

Periodic spot checks of vehicular and pedestrian crossings will be made.

Proposed industrial and commercial developments which might affect the amount, location and type of international traffic will be monitored.

The improvement of existing bridges and the provision of additional pedestrian and vehicular bridges across the border will be studied and programs will be co-ordinated with the appropriate Mexican authorities.

The City (Office of the Mayor and Airport and Mass Transit Dept) will co-ordinate developments in international air carrier routes and international mass transit systems.

Product:

Co-ordination of international transportation improvement programs and projects.

Responsibility:

Primary responsibility for monitoring international transportation needs and proposed developments rests with the City of El Paso.

The Office of International and Urban Affairs under the Mayor of El Paso will assume leadership in co-ordinating international transportation programs and projects proposals with appropriate Mexican authorities.

Staff support and technical assistance will be provided by the State Department of Highways and Public Transportation; the Airport and Mass Transit Dept; the Traffic and Transportation Dept; the Planning Department and the MPO Office as required.

ACTIVITY	300	SPECIAL STUDIES: INITIAL PHASE
ELEMENT	302	LONG RANGE MASS TRANSIT STUDY

Objective:

Development of a plan for the phased implementation and professional management of a comprehensive, integrated mass transportation system over a twenty year period.

Work To Be Undertaken:

- Task 302.01 Project Mobilization and Advisory services. Consultant will provide financial, planning, management and engineering advisory services on transit matters to the City. Consultant will organize and administer work tasks.
- Task 302.02 Organize and Compile Data Base. Consultant will identify planning variables to be used in analyzing long-term transit needs. Appropriate City and State Department of Highways & Public Transportation divisions will provide existing and projected values for these variables: housing units, mean family income, employment, population, auto ownership, land uses, person-trips.
- Task 302.03 Analysis of Data. A mode split model will be used to predict and analyze long-range transit travel demands. This effort will be co-ordinated with Travel Patterns (204) to produce consistent predictions of trip interchange volumes for transit and highway (vehicular) trips.
- Task 302.04 Develop Alternative System Concepts. Alternative transit systems will be developed at the conceptual level to meet the forecast need. Emphasis will be placed on the development of alternatives which are or will become, technically and financially viable within the 10 to 20 year time-span of the planning effort.
- Task 302.05 Evaluate System Concepts and Options. Alternative transit systems will be evaluated at the sketch plan level using the following criteria:

Demand accomodation capability; quality of service desirability; economic feasibility; cost effectiveness; ecological suitability; contingency flexibility; growth responsive adaptability; public acceptability.

- Task 302.06 Develop Preferred System Plan. Based upon the prior evaluation process a preferred transit system plan will be selected. This selected system will be developed in detail including route alignments, equipment requirements, and capital costs.
- Task 302.07 Establish Ridership Forecasts. Refined ridership estimates for the finally selected transit system alternative will be made by corridor. A range of forecasts will be provided given various levels of service and fares.
- Task 302.08 Estimate Revenues and Operating Costs. Present and future alternate fare structures including required fare reductions for the elderly and handicapped for the selected transit system alternative will be developed.
- The fare structure and ridership forecasts will be used to predict revenues for the new system.
- Task 302.09 Prepare Time Phased Implementation Program. A schedule of planned implementation costs and sources of funds will be prepared based upon present and projected needs, the City's financial capabilities, environmental factors and effects of the economic system.
- Task 302.10 Documentation of Long Range Plan and Program. A preliminary report will be prepared and upon approval by UMTA and the City, a final report will be submitted by the Consultant.

Product:

A long range prediction of future transit needs and a plan for meeting these needs.

Responsibility:

Primary responsibility is that of the City of El Paso (Airport and Mass Transit Dept). A Consultant Wilbur Smith and Associates, Houston, Texas, has been retained.

Other participating agencies of the City, County and State will provide technical assistance and staff support as "in-kind services."

ACTIVITY	300	SPECIAL STUDIES: INITIAL PHASE
ELEMENT	303	FREEWAY CONTROL AND SURVEILLANCE

Objective:

To detect and correct deficiencies in freeway operations.

Work To Be Undertaken:

The quality of freeway travel will be assessed by evaluating congestion, travel times and accidents.

If necessary, measures will be devised to limit service volumes, to increase capacity, to increase operating speeds and to reduce accident potential.

Effectiveness of improvements will be estimated initially and measured after they are installed and operable.

Product:

Analyses of current and projected levels of service, including safety.

Program of improvements to maintain desired level of service.

Responsibility:

The State Department of Highways and Public Transportation will be responsible for this work element. The City will furnish technical assistance.

ACTIVITY	300	SPECIAL STUDIES: INITIAL PHASE
ELEMENT	304	CENTRAL BUSINESS DISTRICT TRANSPORTATION SYSTEM STUDY

Objectives:

To define and analyze the various elements of Central Business District transportation systems; i.e. vehicle movements, pedestrian movements, goods movements, transit movements.

To prepare alternative plans and policies for facilitating internal circulation and through traffic movements.

Work To Be Undertaken:

- Task 304.01 Compile data on: pedestrian movements, traffic counts, truck loading and unloading, transit movements, transit schedules, major transfer points, transit transfer points, parking areas, cab stands, signal systems, drive-in facilities, street system. (See Element 201, 202 and 203)
- Task 304.02 Map major elements of transportation system.
- Task 304.03 Analyze traffic movements by elements, time of day, day of week, by season, by purpose.
- Task 304.04 Analyze CBD land uses for transportation service requirements.
- Task 304.05 Compile existing State and City policies and ordinances affecting the transportation system in the CBD: on-street parking, one-way street system, truck loading, truck routes, speed limits, pedestrian movements, fire lanes, bus stops, state highways, federal highways.
- Task 304.06 Identify and analyze transportation system management alternatives short-range improvements in CBD transportation system to include:

co-ordinated signal systems; an expanded one-way street system; pedestrian and vehicle congestion reduction; parking controls; truck and transit routes; signing; and transfer points.

Products:

A documented analysis of the elements of the CBD transportation system.

Short Range transportation system management alternatives for improving the CBD transportation system.

Long Range alternatives for improving the CBD transportation system.

Responsibility:

Primary responsibility will rest with the City of El Paso (Traffic and Transportation Dept). Work will be co-ordinated with the Short Range Transit Development Program (Element 402) and Long Range Transit Plan (Element 302).

A consultant will be retained to assist in this study.

Other City Departments, as well as the State Department of Highways and Public Transportation will provide technical assistance.

ACTIVITY	300	SPECIAL STUDIES: INITIAL PHASE
ELEMENT	305	EAST-WEST CORRIDOR STUDY

Objectives:

To determine and analyze transportation improvements which optimize the movement of vehicles along existing city streets through a congested major corridor between the Central Business District and the Bassett area.

Work To Be Undertaken:

- Task 305.01 Identify critical traffic operations deficiencies in the East-West Corridor: capacity-deficient and high-accident intersections, inadequate signal systems, parking, unstable traffic flow patterns, truck and transit routes, street configurations.
- Task 305.02 Identify transit related elements in the East-West Corridor: bus stops, bus routes and turning movements, major load points, transfer points, major land use attractions.
- Task 305.03 Identify and document existing traffic signal and control equipment available to maximize east-west vehicular flow.
- Task 305.04 Identify the optimum street configuration required to maximize the use of City arterials in order to relieve congestion on Interstate 10.
- Task 305.05 Recommend the street configuration, traffic control system and traffic engineering features most likely to optimize the arterial flow of vehicles.
- Task 305.06 Carry out preliminary engineering studies required to implement the recommendations of Task 305.05.

Products:

A documented analysis of traffic operation deficiencies in the East-West Corridor.

A recommended plan and specifications for street configuration traffic control system and traffic engineering features.

Responsibility:

The City of El Paso:

Traffic & Transportation will provide leadership; the Airport & Mass Transit Department will provide technical support.

A consultant is to be selected.

Technical assistance will be provided by other affected agencies; i.e., City, County, State as required.

Work will be co-ordinated with Element 302 (Long Range Transit Plan), 402 (Short Range Transit Plan), and 304 (Central Business District Study).

It is anticipated that the same Consultant will be used for Elements 304 and 305.

ACTIVITY	300	SPECIAL STUDIES: INITIAL PHASE
ELEMENT	306	GENERAL AVIATION NEEDS STUDY, PHASE I

Objective:

To determine the need for an additional General Aviation Airport to serve El Paso County.

Work To Be Undertaken:

General aviation traffic in El Paso International Airport and other airports serving El Paso County will be analyzed.

General aviation airport facilities required to accomodate existing and future traffic will be estimated.

Recommendations will be made on whether the City or some other agency should develop a new west-side airport and whether Fabens Airport should be expanded or a replacement airport developed.

Product:

Analysis of existing and future general aviation facilities requirements.

Recommendation of whether or not additional general aviation facilities should be developed in El Paso County and who should develop them.

Responsibility:

City of El Paso (Airport and Mass Transit Dept) and El Paso County will co-sponsor this study.

A consultant will be retained.

If the study shows a need for additional general aviation facilities, Phase II will be carried out. Phase II will include a site selection and environmental studies and preparation of a Master Plan.

ACTIVITY	300	SPECIAL STUDIES: INITIAL PHASE
ELEMENT	307	COUNTY TRAFFIC ENGINEERING STUDY

Objective:

To develop a comprehensive Traffic Engineering Plan for areas in El Paso County outside the incorporated limits of the City of El Paso.

Work To Be Undertaken:

A review of all previous plans, surveys and studies that will affect a comprehensive Traffic Engineering Plan will be made. This is a requirement of the funding agency.

Other major tasks to be included in the current study are:

Analyze Traffic Volumes:

- a. Develop present flow map
- b. Develop standard continuing traffic count program

Inventory and analyze traffic signal system:

- a. Existing conditions
- b. Improvements (short & long term)
- c. Compliance with the Manual for Uniform Traffic Control Devices (MUTCD)

Sign Inventory

- a. Existing
- b. Improvements (short & long term)
- c. Compliance with manual (MUTCD)

Traffic Accident Study

- a. Accident coding
- b. Field condition diagram
- c. Roadway Improvements (Short & long term)

Capacity of Major Streets

- a. Existing conditions
- b. Improvements (short & long term)

Parking

- a. Existing conditions
- b. Existing ordinances and resolutions
- c. Improvements (short & long term)

Traffic Circulation in major activity centers.

Example: Shopping Centers

School Areas

- a. Safe School Routes - Elementary & Junior High
- b. Improvements (short & long term)

Current traffic laws (include abandoned vehicles)

- a. Continuity of traffic laws with adjoining cities, state, and county(s)
- b. Bicycle paths and trails
- c. Speed Zoning
- d. Out-dated traffic laws

Railroad Studies - Crossings

Map(s) showing all Highway Systems

- a. IH
- b. US
- c. SH-FA
- d. SH
- e. FM-FA
- f. FM-RM-Park Road
- g. Topics
- h. Urban
- i. Urban Extensions
- j. Other roads not maintained by City (excluding private)

A City street map folded inside cover

Pavement markings (improvements, short & long term)

Potential hazardous locations:

- a. Sharp curves
- b. Steep grades
- c. Road side hazards
- d. Narrow Bridges
- e. Guard Rails

Other studies peculiar to individual cities or counties.

(To Be Defined)

Product:

An analysis of existing traffic operations.

A recommended plan of traffic engineering improvements to correct deficiencies and eliminate hazardous conditions.

Responsibility:

The County of El Paso will direct the study.

A consultant will be hired.

Funding from the Governor's Office of Traffic Safety is anticipated.

ACTIVITY	300	SPECIAL STUDIES: INITIAL PHASE
ELEMENT	308	TRUCK ROUTE STUDY

Objective:

To plan truck routes which provide for optimum terminal and distribution facilities access.

To provide truck routes which protect public health and safety.

Work To Be Undertaken:

The inventory of truck terminal and transfer facilities produced in Element 205 will be used to identify major truck traffic generators. Truck origin, destination and routing information will be obtained.

Desired truck routes, existing truck routes, truck route restraints found in laws and ordinances, special constraints developed by City departments (incl. Fire & Police) will be mapped.

Analysis of desired routes and route constraints will produce a final recommended plan.

Product:

A system of recommended truck routes for through trucks and local trucks for distribution of general commodities, construction materials, explosives, flammables and dangerous chemicals.

Responsibility:

City of El Paso (Traffic & Transportation) will direct this study.

Technical assistance will be provided by other City Departments and the State Department of Highways and Public Transportation.

ACTIVITY	300	SPECIAL STUDIES: INITIAL PHASE
ELEMENT	309	BICYCLE TRAILS STUDY

Objectives:

To prepare and maintain a city-wide plan for providing safe, attractive and usable bicycle trails both on-street and off-street.

Work To Be Undertaken:

Streets that can be modified to provide for safe, marked bicycle trails or paths will be determined.

Other areas suitable for use as bicycle paths will be studied such as: irrigation drain and canal rights of way; unpaved street or highway right of way; shoulders, sidewalks, utility easements, etc.

A general plan for location of future bicycle paths will be developed.

Plans for construction and marking of selected bicycle paths will be made.

Applications for funding of bicycle trail projects will be prepared and submitted to the appropriate state or federal agencies.

Product:

A city-wide plan for the development of bicycle trails.

Specific plans for project implementation.

Responsibility:

The plan will be reviewed by the Steering Committee and approved by the Policy Committee.

The City of El Paso, Dept of International & Urban Affairs will prepare the plan in co-ordination with the City Dept of Traffic and Transportation. The State Dept of Highways & Public Transportation will provide technical assistance.

ACTIVITY	400	PLAN SELECTION AND PROGRAMMING
ELEMENT	401	LONG-RANGE ALTERNATIVES ANALYSIS

Objective:

To analyze and evaluate one or more plans which will satisfy all requirements for transportation services within the El Paso urban area to the year 2000.

Work To Be Undertaken:

Develop plans to satisfy the needs for surface transportation of all residents and visitors to the area.

The plans will integrate those technologies which analysis indicates to be beneficial and feasible. Criteria for evaluation of the plans will be developed.

The advantages and disadvantages of the alternatives will be identified.

A single plan being optimally responsive to the needs of the community, i.e., greatest benefits at acceptable costs will be selected.

The plan will be adopted as a basis for improvements.

Product:

Evaluation of alternative plans employing splits in demand between different modes of transportation and different combinations of capital and non-capital improvements to meet the demands.

Selection of "best" plan.

Responsibility:

The City, the County and the State Department of Highways and Public Transportation will formulate and appraise alternative plans under the guidance of the Steering Committee.

The Policy Advisory Committee, upon recommendation of the Steering Committee, will select one of the alternative plans and adopt it as the basis for programming capital and non-capital improvements.

Evaluation of alternatives will be carried out in conjunction with the revision of the City of El Paso Comprehensive Plan and the Goals for El Paso Program, Phase II - Implementation of Goals.

ACTIVITY	400	PLAN SELECTION AND PROGRAMMING
ELEMENT	402	SHORT RANGE TRANSIT DEVELOPMENT PROGRAM

Objective:

To maintain a valid 5-year program for development of transit facilities and service in the El Paso Urban Area.

Work To Be Undertaken:

Task 402.01 Update Transit Data Base. Items to be examined include routes, fare structures, maintenance facilities, bus fleets, revenue, and operating cost data for the systems in operation.

Socioeconomic characteristics of the population of El Paso will be reviewed. Other users of the transit system will be identified and characteristics determined. Typical characteristics of transit operations will include bus hours, bus miles, revenue passengers per bus mile by transit line, riders per traffic zones, riders per capita, headways by time-of-day, by line, and other similar facts.

These facts will be summarized for use in the short-range report of findings.

Task 402.02 Analyze Transit Data. The transit data base of Task 402.01 will be analyzed to determine immediate and short-range improvement recommendations. Extensive use will be made of sketch planning and, subject to availability, zonal trip interchanges produced by the State Department of Highways and Public Transportation. The analysis will result in a quantification of estimated demand for transit in the El Paso area for the next five-year period (1976-1980). Recommendations to adjust the supply of transit services to meet the demands will then be formulated for review by the City.

Task 402.03 Develop Transit Marketing Program. Marketing techniques used by transit operators in El Paso will be documented

and evaluated. The basic elements which should be incorporated into an updated marketing program will be outlined. The possibility of special marketing needs, such as bilingual informational services, will be considered in making recommendations. Visual elements such as buses (color scheme), shelters, benches, bus stop signs, system logo, schedules, maps, etc., will be included in the recommended marketing program for consideration by the City.

Task 402.04 Develop Low Capital and Para-Transit Solutions. Innovative techniques for providing transit service which are non-capital intensive, will be studied to ascertain their applicability to the El Paso area. The City will provide available information and data on existing para-transit services now operating in El Paso. A number of alternative concepts will be explored, including van pools, bus clubs, and taxi services. The techniques which are best suited to the El Paso area will be considered for inclusion in the development of alternative transit concepts.

A carpool matching program and required administrative procedures will be established for use by major employers. The City will contact major employers and make them aware of the availability of this program.

Task 402.05 Establish Elderly and Handicapped Needs. The location and transportation needs of the elderly and handicapped will be estimated from a survey of the social service agencies which are identified by the City in Task 402.04. The Consultant will design and mail a survey questionnaire to the identified social agencies and tabulate the survey results. The tabulated information will be used by the Consultant to estimate the transportation needs of elderly and handicapped persons in the El Paso area. Alternative means of satisfying these needs will be investigated for inclusion in alternative transit concepts. (Task 302.04)

Task 402.06 Design Surveillance and Monitoring Program. Techniques for evaluating the efficiency

of the transit system will be outlined. The nature and size of data base that must be maintained to monitor the progress in implementing the improvement program and facilitate future updates of the improvement program will be defined as well as the agency responsible for surveillance.

Task 402.07 Develop Transit System Management (TSM) Element. The four major categories which will be reviewed and considered in developing the transit portion of the TSM for the City are outlined as follows:

- a. Actions to ensure the efficient use of existing road space;
- b. Actions to reduce vehicle use in congested areas;
- c. Actions to improve transit service;
- d. Actions to increase internal management efficiency.

Task 402.08 Prepare Transit Improvement Program. The work of all previous tasks in the short-range section and previously completed Transit Development Programs (TDP) by the City will be utilized to produce an updated Short Range (five-year) Transit Improvement Program for the time interval (1976-1980). The program will provide documentation of recommendations produced in the study as well as capital and operating cost estimates for improvements. A preliminary report describing the program will be prepared and, upon approval, a final version will be prepared to provide complete documentation of the program.

Products:

A Short Range Transit Development Program that is financially feasible and that will provide services required by the citizens of El Paso, especially the elderly, the handicapped and the poor.

A carpool matching program that is available for use by private industry and public agencies.

Responsibility:

The City of El Paso (Airport and Mass Transit Depart-

ment) will direct this study. Wilbur Smith & Associates, Houston, Texas, have been retained as consultant.

Other City departments and participating agencies will provide technical assistance as required.

The Mayor and City Council of the City of El Paso will give policy guidance and will adopt the recommendations.

The City of El Paso will be implementing any capital improvements and changes in service after completing the purchase of the three private bus companies.

The Short Range Transit Development Program will be submitted to the Steering Committee and Policy Committee for their review and approval.

The carpool matching program(s) will be developed by the City (Traffic & Transportation Dept). They will provide technical assistance to any company or agency requesting it.

ACTIVITY	400	PLAN SELECTION AND PROGRAMMING
ELEMENT	403	TRANSPORTATION SYSTEM MANAGEMENT PLAN

Objective:

To develop low capital and non-capital programs to improve the operations, capacity, safety and efficiency of existing transportation facilities.

Work To Be Undertaken:

Results of studies carried out under previous Work Elements will be analyzed: i.e., 203 Transportation Facilities; 206 Financial Resources; 208 Travel Times; 209 Major Traffic Generator Study; 304 CBD Transportation Study; 305 East/West Corridor Study; 307 County Traffic Engineering Study; 308 Truck Route Study; 402 Short Range Transit Development Program.

A short-range program of low capital and non-capital projects will be developed to correct deficiencies indicated.

Product:

A 3 to 5 year projection of low capital projects and non-capital programs required to maximize operations of the transportation system will be prepared.

Responsibility:

The MPO Office will provide coordination of a task force of participating agencies with modal responsibilities.

This group will develop a single program of projects.

The TSM Plan will be reviewed by the Steering Committee and adopted by the Policy Committee.

ACTIVITY	400	PLAN SELECTION AND PROGRAMMING
ELEMENT	404	TRANSPORTATION IMPROVEMENT PROGRAM

Objective:

To prepare a 5 year program of highway and transit improvement projects which will be advanced for funding and implementation by local, state and federal agencies.

Work To Be Undertaken:

Current long range plan requirements will be reviewed to determine which improvement projects should be implemented in the coming year.

Major revisions in the long range plan will be studied as these are completed.

Financial resources of the local, state and federal agencies will be considered.

The timing of major urban developments requiring new transportation facilities will be considered.

Product:

A five year program of transportation improvement projects including an annual element and TSM type projects.

Anticipated funding levels of the Urban Mass Transportation Administration may not be exceeded by cost estimates of proposed transit projects.

Cost estimates for highway improvements to be funded by the State and Federal Highway agencies may slightly exceed the anticipated available funds to provide for unforeseen project design, right of way, or construction delays.

Responsibility:

The MPO Office will coordinate a task force of representatives from all concerned agencies.

This group will prepare the TIP.

The TIP will be reviewed by the Steering Committee and adopted by the Policy Committee with revisions as required.

1976-77 UNIFIED WORK PROGRAM FOR TRANSPORTATION PLANNING

V. WORK PROGRAM ELEMENTS BY AGENCY PARTICIPATION AND COST ESTIMATES

	I&UA OFFICE	CITY OF EL PASO			EL PASO COUNTY	STATE DEPT OF OF HWYS & PUBLIC TRANS.	WEST TEXAS COUNCIL OF OF GOVERNMENTS	CONSULTANT	TOTAL
		PLANNING	TRAFFIC & TRANS.	AIRPORT & MASS TRANSIT					
100 Program Administration & Management									
101 Program Management- Budget Monitoring, Request for Payment	\$	\$	\$ 6,250**	\$ 8,000*	\$	\$ 10,000	\$	\$ 24,250	
102 Program Co-ordination (incl Service, Revised Operations, Revised Prospectus, Agree- ment)			400	6,250**	10,000*	995	3,000	100+	20,745
103 Policy Development (incl Policy Committee Meetings, Citizen Involvement Plans, Goals & Objectives)	17,000+	200*	2,000**	5,500*	1,025	4,500	200+	30,425	
104 Progress Reports (incl SDH&PT Annual Report; Also Requested Budget Progress Reports)		300	1,000**	1,000*	255	4,500		7,055	
105 Service to Public	5,000	200	6,000**	5,000*		3,000		19,200	
106 Review & Comment (A-95 Review)			200**	200*		300	800+	1,500	
107 FY 1978 Unified Work Program	300	800	1,500**	2,000*	575	750	100+	6,025	
108 In Service Training		1,300*	5,000**	500*	555	3,150		10,505	

-85-

1976-77 UNIFIED WORK PROGRAM FOR TRANSPORTATION PLANNING

May 28, 1976

V. WORK PROGRAM ELEMENTS BY AGENCY PARTICIPATION AND COSTS ESTIMATES

	I&UA OFFICE	CITY OF EL PASO			EL PASO COUNTY	STATE DEPT OF OF HWYS & PUBLIC TRANS.	WEST TEXAS COUNCIL OF OF GOVERNMENTS	CONSULTANT	TOTAL
	PLANNING	TRAFFIC & TRANS.	AIRPORT & MASS TRANSIT	MPO					
200	<u>Continuing Phase: Data Inventory & Projections</u>								
201	Economic Indices	\$10,000*	\$	\$	\$	\$ 1,200	\$ 1,000+	\$	\$ 12,200
202	Land Use	34,840**			2,050	500	3,000+		40,390
203	Transportation Facilities		6,000 */**			6,500*			12,500
204	Travel Patterns (incl Traffic Counts)				695	38,700 ^{HPR}			39,395
205	Terminal & Transfer Facilities (incl Private Mass Transit Facilities)	500	3,000*	1,500**	200*	990	3,000		9,190
206	Financial Resources	500	700	1,500**	1,000*	340	1,500		5,540
207	Social, Environment & Economic Impacts	1,500	200		1,000*	6,000	500+	15,000**	24,200
208	Travel Time (incl Airport Access Study)		1,000	2,000**		5,000			8,000
209	Major Traffic Generator Study	500	5,500*	1,000**		500*			7,500
300	<u>Special Studies: Initial Phase</u>								
301	Bi-National Transportation Study	1,500	500		2,500*	500*		20,000**	25,000
302	Long Range Mass Transit Study	4,300**	3,600**	29,900**	400**	4,500*		117,000**	159,700

1976-77 UNIFIED WORK PROGRAM FOR TRANSPORTATION PLANNING

May 28, 1976

V. WORK PROGRAM ELEMENTS BY AGENCY PARTICIPATION AND COST ESTIMATES

	<u>I&UA OFFICE</u>	<u>PLANNING</u>	<u>CITY OF EL PASO TRAFFIC & TRANS.</u>	<u>AIRPORT & MASS TRANSIT</u>	<u>MPO</u>	<u>EL PASO COUNTY</u>	<u>STATE DEPT OF OF HWYS & PUBLIC TRANS.</u>	<u>WEST TEXAS COUNCIL OF OF GOVERNMENTS</u>	<u>CONSULTANT</u>	<u>TOTAL</u>
<u>300 Special Studies: Initial Phase</u>										
303			\$ 700				IPE \$ 14,000			\$ 14,700
304		500	1,500**		300*		300		15,000**	17,600
305		500	1,500**		300*		300		51,200**	53,800
306							500		24,000+	24,500
307						44,000s				44,000
308		100	1,500*				750*			2,350
309	1,000									1,000
<u>400 Plan Selection & Programming</u>										
401		1,000	700	3,000**	2,000*	5,000	2,000*	300+		14,000
402		2,300**	3,700**	19,100**	200**	9,000	5,750 *	700+	38,000**	78,750
403		200	3,000*	900**	500*	800	500*	100+		6,000
404		300	1,000	1,000**	500*	845	1,000*	100+		4,745
AGENCY TOTAL:	\$1,000	\$80,840	\$37,300	\$90,100 88,100	\$41,100	\$67,125	\$122,200	\$ 6,900	280,200	\$724,765

HPR-Includes \$31,200 Highway Planning & Research Funds

*Includes FHWA "112" Funds
**Includes UMTA "Sec. 9" Funds

+Includes other Federal funds: HUD, AAA, EDA, FAA
s- Governor's Office of Traffic Safety Funds

IPE-Investigation & Planning Expense

-60-

1976-77 UNIFIED WORK PROGRAM FOR TRANSPORTATION PLANNING

May 28, 1976

VI. WORK PROGRAM ELEMENTS BY PROPOSED FUNDING SOURCES

	FHWA 112 FUNDS	STATE DEPT OF HIGHWAYS AND PUBLIC TRANS.	UMTA/ LS*	HUD/ LS*	FAA/ LS*	CITY, COUNTY, OTHER FEDERAL/ LS*	TOTAL
			(FY 1976) (Funds)	(FY 1977) (Funds)			
100 <u>Program Administration & Management</u>							
101 Program Management- Budget Monitoring, Request for Payment	\$ 8,000	\$10,000	\$	\$ 5,000/1,250	\$	\$	\$ 24,250
102 Program Co-ordination (incl Service, Revised Operations, Revised Prospectus, Agree- ment)	10,000	3,000		5,000/1,250	67/33	1,395	20,745
103 Policy Development (incl Policy Committee Meetings, Citizen Involvement Plans, Goals & Objectives)	5,700	4,500		1,600/ 400	11,466/5,734	1,025	30,425
104 Progress Reports (incl SDH&PT Annual Report; Also Requested Budget Progress Reports)	1,000	4,500		800/200		555	7,055
105 Service to Public	5,000	3,000		4,800/1,200		5,200	19,200
106 Review & Comment (A-95 Review)	200	300		160/40		660+/140	1,500
107 FY 1978 Unified Work Program	2,000	750		1,200/300	67/33	1,675	6,025
108 In Service Training	1,800	3,150		4,000/1,000		555	10,505

1976-77 UNIFIED WORK PROGRAM FOR TRANSPORTATION PLANNING

May 28, 1976

VI. WORK PROGRAM ELEMENTS BY PROPOSED FUNDING SOURCES

	FHWA 112 FUNDS	STATE DEPT OF HIGHWAYS AND PUBLIC TRANS.	UMTA/ LS*	HUD / LS*	FAA/ LS*	CITY, COUNTY, OTHER FEDERAL/ LS*	TOTAL
			(FY 1976) (Funds)	(FY 1977) (Funds)			
200	<u>Continuing Phase: Data Inventory & Projections</u>						
201	Economic Indices	\$10,000	\$ 1,200	\$	\$	\$ 667/333	\$ 12,200
202	Land Use	6,840	500			20,667/10,333	\$ 2,050
203	Transportation Facilities	5,300	5,000			\$ 1,760/440	12,500
204	Travel Patterns (incl Traffic Counts)		38,700 ^{HPR}				695
205	Terminal & Transfer Facilities (incl Private Mass Transit Facilities)	3,200	3,000		1,200/300		1,490
206	Financial Resources	1,000	1,500		1,200/300		1,540
207	Social, Environment & Economic Impacts	1,000	6,000		12,000/3,000	333/167	1,700
208	Travel Time (incl Airport Access Study)		5,000		1,600/400		1,000
209	Major Traffic Generator Study	6,000			800/200		500
300	<u>Special Studies: Initial Phase</u>						
301	Bi-National Transportation Study	3,000			16,000/4,000		2,000
302	Long Range Mass Transit Study	4,500	105,200/25,000	20,000/5,000			159,700

-62-

1976-77 UNIFIED WORK PROGRAM FOR TRANSPORTATION PLANNING

May 28, 1976

VI. WORK PROGRAM ELEMENTS BY PROPOSED FUNDING SOURCES

	FHWA 112 FUNDS	STATE DEPT OF HIGHWAYS AND PUBLIC TRANS.	UMTA/ LS*	HUD/ LS*	FAA/ LS*	CITY, COUNTY, OTHER FEDERAL/ LS*	TOTAL
			(FY 1976)	(FY 1977)			
300 <u>Special Studies: Initial Phase</u>							
303 Freeway Control and Surveillance	\$	IPE \$ 14,000	\$	\$	\$	\$ 700	\$ 14,700
304 CBD Transportation System Study	5,300	300		9,200/2,300		500	17,600
305 East/West Corridor Study	45,300	300		6,160/1,540		500	53,800
306 "General Aviation" Needs Study Phase I		500			16,000/8,000		24,500
307 County Traffic Engineering Study						44,000s	44,000
308 Truck Route Study	1,250					1,100	2,350
309 Bicycle Trail Study						1,000	1,000
400 <u>Plan Selection & Programming</u>							
401 Long Range Alternative Analysis	4,000			2,400/600	200/100	6,700	14,000
402 Short Range Transit Development Program	1,250	5,000	44,800/12,500	3,600/900	67/33	10,000 (a) 540/60	78,750
403 Transportation System Management Plan	4,000			720/180		1,000 (e) 80/20	6,000
404 Transportation Improve- ment Program	1,500			800/200		2,145 (e) 80/20	4,745
FUNDING TOTALS:	\$137,140	\$110,200	\$150,000/37,500	\$100,000/25,000	\$33,534/16,766	\$16,000/8,000 \$90,385/240	\$724,765

HPR-Includes \$31,200 Highway Planning & Research Funds
IPE-Investigation & Planning Expense

*LS - Local Share
+Federal funds: AAA-180
EDA-480

(a) Federal Area Agency for Aging funds
(e) Federal Econ. Dev. Act Funds
s Govn. Office of Traffic Safety Funds

1976 - 77 UNIFIED WORK PROGRAM FOR TRANSPORTATION PLANNING

VII. WORK PROGRAM ELEMENTS BY TIME ESTIMATES

	F.Y. 1976			F.Y. 1977											
	JUNE	JULY	AUG.	SEPT.	OCT.	NOV.	DEC.	JAN.	FEB.	MAR.	APR.	MAY	JUNE	JULY	AUG.
100 PROGRAM ADMINISTRATION AND MANAGEMENT															
101 Program Management															
102 Program Co-ordination															
103 Policy Development															
104 Progress Reports															
105 Service to Public															
106 Review & Comment															
107 1978 Unified Work Program															
108 In-Service Training															
200 CONTINUING PHASE: DATA INVENTORY AND PROJECTION															
201 Economic Indices															
202 Land Use															
203 Transportation Facilities															
204 Travel Patterns															
205 Terminal & Transfer Facilities															
206 Financial Resources															
207 Social, Environmental and Economic Impacts															
208 Travel Time															
209 Major Traffic Generator Study															
300 SPECIAL STUDIES: INITIAL PHASE															
301 Bi-National Transportation Study															
302 Long Range Mass Transit Study															
303 Freeway Control and Surveillance															
304 CBD Transportation Study															
305 East/West Corridor															
306 General Aviation Needs Study															
307 County Traffic Engineering Study															
308 Truck Route Study															
309 Bicycle Trails Study															
400 PLAN SELECTION AND PROGRAMMING															
401 Long Range Alternatives Analysis															
402 Short Range Transit Development Program															
403 Transportation System Management Plan															
404 Transportation Improvement Program															

VIII. Work Program Elements by Agency Roles

ACTIVITY 100 - PROGRAM ADMINISTRATION AND MANAGEMENT

AGENCY	101 PROGRAM MANAGEMENT- BUDGET MONITORING	102 PROGRAM CO-ORDINATION	103 POLICY DEVELOP- MENT	104 PROGRESS REPORTS	105 SERVICE TO PUBLIC	106 REVIEW AND COMMENT (A-95)	107 FY 1978 UNIFIED WORK PROGRAM	108 IN-SERVICE TRAINING
STATE DEPT OF HWYS & PUBLIC TRANSPORTATION	Staff Support	Staff Support	Review; Recommend	Leader- ship	Leader- ship	Staff Work	Staff Support	Participate
WEST TEXAS COUNCIL OF GOVERNMENTS	Staff Support	Staff Support	Review; Recommend	Staff Support	Review	Leader- ship -	Staff Support	
CITY OF EL PASO (MPO)								
PLANNING		Staff Support	Rev;Recom	Sta/Sup	Leadership	Staff Work	Staff Support	
TRAFFIC & TRANSPORTATION		Staff Support	Rev;Recom	Sta/Sup	Leadership	Staff Work	Staff Support	Participate
AIRPORT & MASS TRANSIT	Staff Support	Staff Support	Rev;Recom	Sta/Sup	Leadership	Staff Work	Staff Support	Participate
MPO OFFICE	Leadership	Leadership	Staff Sup	Leadership	Leadership	Staff Work	Leadership	Leadership
OFC OF INT'L & URBAN AFFAIRS		Staff Support	Rev;Recom	Sta/Sup	Leadership	Staff Work	Staff Support	
COUNTY OF EL PASO	Staff Support	Staff Support	Review; Recommend	Staff Support	Leadership	Staff Work	Staff Support	Participate
POLICY ADVISORY COMMITTEE	Review	Review	Leadership	Review	Review	Respond if necessary	Approve	Approve
STEERING COMMITTEE (Includes Executive Committee)	Review	Review	Review; Recommend	Review	Review	Respond if necessary	Recommend	Recommend
TRANSIT OPERATORS (Private & Non-Profit)		Review	Review; Recommend					

- 5 -

VIII. Work Program Elements by Agency Roles

ACTIVITY 200 - CONTINUING PHASE: DATA INVENTORY & PROJECTIONS

AGENCY	201 ECONOMIC INDICES	202 LAND USE	203 TRANSPORT FACILITIES	204 TRAVEL PATTERNS	205 TERMINAL & TRANSFER FACILITIES	206 FINANCIAL RESOURCES	207 SOCIAL, ENVIRONMENT & ECONOMIC IMPACTS	208 TRAVEL TIME	209 MAJOR TRAFFIC GENERATOR STUDY
STATE DEPT OF HWYS & PUBLIC TRANSPORTATION	Review	Review	Technical Assistance	Leader- ship	Technical Assistance	Leader- ship	Leader- ship	Leader- ship	Technical Assistance
WEST TEXAS COUNCIL OF GOVERNMENTS	Review	Staff Support	Review	Review	Review	Review	Review & Comment	Review	Review
CITY OF EL PASO (MPO) PLANNING TRAFFIC & TRANSPORTATION AIRPORT & MASS TRANSIT MPO OFFICE OFC OF INT'L & URBAN AFFAIRS	Leader. Review Review Review	Leader. Review Review Review	Staff Sup. Leader. Review Review	Sta/Sup Sta/Sup Sta/Sup Review Review	Sta/Sup Leader. Leader. Review Review	Leader. Leader. Leader. Sta/Sup Review	Leadership Leadership Leadership Staff Sup. Review	Review Leader. Tech/Ast Review Review	Tech/Asst Leadership Review Review Review
COUNTY OF EL PASO	Review	Staff Support	Review	Review	Review	Review	Review	Review	Review
POLICY ADVISORY COMMITTEE	Review	Review	Review	Review	Review	Review	Review & Comment	Review	Review
STEERING COMMITTEE (Includes Executive Committee)	Review	Review	Review	Review	Review	Review	Review & Comment	Review	Review
TRANSIT OPERATORS (Private & Non-Profit)			Technical Assistance	Review	Technical Assistance	Technical Assistance	Technical Assistance	Technical Assistance	Technical Assistance Review

VIII. Work Program Elements by Agency Roles

ACTIVITY 300 - SPECIAL STUDIES: INITIAL PHASE

AGENCY	301	302	303	304	305	306	307	308	309
	BI-NATIONAL TRANSPORT STUDY	LONG RANGE MASS TRANSIT STUDY	FREEWAY CONTROL & SURVEILLANCE	CBD TRANSPORT SYSTEM STUDY	EAST/WEST CORRIDOR STUDY	"GENERAL AVIATION" NEEDS STUDY PHASE I	COUNTY TRAFFIC ENGINEER- ING STUDY	TRUCK ROUTE STUDY	BICYCLE TRAIL STUDY
STATE DEPT OF HWYS & PUBLIC TRANSPORTATION	Technical Assistance	Technical Assistance	Leader- ship	Tech Asst	Tech Asst	Review	Review	Tech Asst	Tech Asst
WEST TEXAS COUNCIL OF GOVERNMENTS	Review	Review	Review	Review	Review	Review	Review	Review	Review
CITY OF EL PASO (MPO) PLANNING	Tech Ast & Sta/Sup	Tech Ast & Sta/Sup	Review	Tech Ast	Tech Ast	Review	Review	Tech Ast	Tech Ast
TRAFFIC & TRANSPORTATION	" "	" "	Tech Ast	Leader.	Leader.	Review	Review	Leader.	Tech Ast
AIRPORT & MASS TRANSIT	" "	Leadership	Review	Tech Ast	Tech Ast	Leader.	Review	Review	Review
MPO OFFICE	" "	Tech/Sta/Sup	Review	Sta/Sup	Sta/Sup.	Review	Review	Review	Review
OFFICE OF INT'L & URBAN AFFAIRS	Leader.	Review	Review	Review	Review	Review	Review	Review	Leadership
COUNTY OF EL PASO	Review	Review	Review	Review	Review	Leader- ship	Leader- ship	Review	Review
POLICY ADVISORY COMMITTEE	Review	Review & Approve	Review	Review	Review	Review & Approve	Review	Review	Review & Approve
STEERING COMMITTEE (Includes Executive Committee)	Review	Review & Comment	Review	Review	Review	Review & Comment	Review	Review	Review Recommend
TRANSIT OPERATORS (Private & Non-Profit)	Review	Technical Assistance & Review	Review	Review	Review	Review	Review	Review	Review

VIII. Work Program Elements by Agency Roles
ACTIVITY 400 - PLAN SELECTION & PROGRAMMING

AGENCY	401 LONG RANGE ALTERNATIVE ANALYSIS	402 SHORT RANGE TRANSIT DEVELOPMENT PROGRAM	403 TRANSPORTATION SYSTEM MANAGEMENT PLAN	404 TRANSPORTATION IMPROVEMENT PROGRAM
STATE DEPT OF HWYS & PUBLIC TRANSPORTATION	Staff Support & Tech Asst	Technical Assistance	Staff Support & Tech Asst	Staff Support & Tech Asst
WEST TEXAS COUNCIL OF GOVERNMENTS	Review & Comment	Review	Review	Review
CITY OF EL PASO (MPO) PLANNING TRAFFIC & TRANSPORTATION AIRPORT & MASS TRANSIT MPO OFFICE OFFICE OF INT'L & URBAN AFFAIRS	Staff Support & Tech Asst " " " " " " " "	Tech Asst " " Leadership Staff Support Staff Support	Staff Support & Tech Asst " " " " Co-ordinate Staff Support	Staff Support & Tech Asst " " " " Co-ordinate Staff Support
COUNTY OF EL PASO	Staff Support & Tech Asst	Review	Staff Support & Tech Asst	Staff Support & Tech Asst
POLICY ADVISORY COMMITTEE	Review, Approve Adopt	Review & Approve	Review & Adopt	Review & Adopt
STEERING COMMITTEE (Includes Executive Committee)	Leadership Review & Recommend	Review & Recommend	Review & Recommend	Review & Recommend
TRANSIT OPERATORS (Private & Non-Profit)	Review	Technical Assistance	Technical Assistance & Review	Technical Assistance & Review

APPENDIX A

POLICY ADVISORY COMMITTEE

The Honorable Don Henderson
Chairman
Mayor, City of El Paso
City-County Building
500 East San Antonio
El Paso, Texas 79901

The Honorable Ronald D. Coleman
State Representative
604 Myrtle
El Paso, Texas 79902

The Honorable T. Udell Moore
Vice-Chairman
County Judge
County of El Paso
City-County Bldg, Rm 212
El Paso, Texas 79901

The Honorable Luther Jones
State Representative
1551 Montana
El Paso, Texas 79901

The Honorable Richard C. White
Member of Congress
146 U. S. Courthouse
El Paso, Texas 79901

The Honorable James J. Kaster, Jr.
State Representative
3409 Nairn
El Paso, Texas 79925

The Honorable H. Tati Santiesteban
State Senator
14K, El Paso National Bank Bldg
El Paso, Texas 79901

The Honorable Paul Moreno
State Representative
550 East Paisano
El Paso, Texas 79901

The Honorable Adrian E. Baca
Mayor, City of Anthony
P. O. Box 1269
Anthony, Texas 88021

The Honorable Robert M. O'Kelley
State Representative
8015 Alameda
El Paso, Texas 79907

APPENDIX B

STEERING COMMITTEE FOR THE EL PASO TRANSPORTATION STUDY

EXECUTIVE COMMITTEE

Jonathan R. Cunningham	Chairman, Director, Dept of Planning Research & Development, City of El Paso
Joe Battle	Vice-Chairman, District Engineer, State Department of Highways & Public Trans.
George Dieter	Vice-Chairman, Director, Public Works, City of El Paso
Ed Daley	Road & Bridge Administrator, County of El Paso
Tom Diamond	Member, Airport & Mass Transit Board City of El Paso
E. Ray Hill	Executive Director, West Texas Council of Governments
Walter Jones	Airport Manager-Director of Transit, El Paso International Airport
Tom Kelly	Study Co-ordinator, El Paso Transporta- tion Study, State Department of Highways and Public Transportation
Judith M. Price	Metropolitan Planning Organization Officer, City of El Paso
J. Dryden Smith, Jr.	Director, Traffic & Transportation, City of El Paso
Nestor Valencia	Executive Assistant to the Mayor, City of El Paso

STEERING COMMITTEE - OTHER MEMBERS

Col. William A. Anderson
Director of Facilities
Engineering
U.S. Army Air Defense Center
Fort Bliss, Texas 79916

Bill J. Howard
Albuquerque Airports District
Office Chief/Area Co-ordinator
P. O. Box 9253
Albuquerque, N. M. 87119

Robert Cameron
Traffic Safety Co-ordinator
City of El Paso
City-County Building
500 East San Antonio
El Paso, Texas 79901

L. Eugene James, Mass Transit Studies
Project Manager
El Paso International Airport
El Paso, Texas 79922

E. J. Diaz
Vice President & District Mgr.
El Paso City Lines
130 North Cotton
El Paso, Texas 79901

Howard McCann
Federal Highway Administration
826 Federal Highway Building
Austin, Texas 78701

Harold Dudley
Vice President & Gen. Mgr.
Whitfield Transportation Co.
28 San Marcos Drive
El Paso, Texas 79922

Walter M. Orr
Train Master
Atcheson, Topeka & Santa Fe Railroad
805 S. Santa Fe
El Paso, Texas 79901

Glen Ford, Regional Rep.
Urban Mass Transportation
Administration
Department of Transportation
Suite 9A32, 819 Taylor St.
Fort Worth, Texas 76102

A. Henry Pearson
District Design Engineer
State Department of Highway & Public
Transportation, District 24
P. O. Box 10278
El Paso, Texas 79994

Sabino Gomez
Regional Supervisor
Texas Air Control Board
9615 Sims
El Paso, Texas 79923

~~Texas Aeronautical Commission~~
air control
* Charles R. Barden
Exec. Dir. 8520 Shoal Creek
Texas Railroad Commission 78757
of Texas
Austin, Texas

Jack L. Housworth
Urban Transportation &
Mass Transit Planning
State Department of Highways
and Public Transportation
P. O. Box 5051
Austin, Texas 78763

J. W. Thomas
State Department of Highways &
Public Transportation
D-10
P. O. Box 5051
Austin, Texas 78763

* Jorge Vargas
City Engineer
City of El Paso

Texas Aeronautical
Charles A. Murphy
Exec. Dir.
1104 State ~~Finance~~ Bld
Austin, T. 78701